

English

Table of Contents

1. Introduction	3
1.1 Preface	3
1.2 Packing List	3
1.3 Caution	4
1.4 Connection	5
1.5 First Time Usage.....	10
2. About the Player.....	11
2.1 Remote Control.....	11
2.2 Front Panel	13
2.3 Rear Panel.....	13
2.4 Side Panel	14
3. Functions.....	15
3.1 Main Interface	15
3.2 Photo Playback.....	15
3.3 Music Playback.....	16
3.4 Movie Playback.....	16
3.5 Browser	17
3.5.1 DVD Playback.....	17
3.6 Storage device	18
3.7 Setup Menu.....	19
4. Upgrading the Firmware.....	22
5. Appendixes.....	23
5.1 Specifications.....	23
5.2 Frequently Asked Questions	25
5.3 Copyrights and Trademarks.....	27
5.4 Warranty	27

1. Introduction

1.1 Preface

Thank you for purchasing the FANTEC R2450. We hope you will enjoy using it as a great home entertainment partner.

This player has the following functionality:

- Data Storage - supports 3.5" SATA HDD up to 1TB.
- Video Playback - Supports AVI, VOB (DVD), MPG, DAT files with corresponding codec: MPEG-1, MPEG-2, Divx, Xvid
- Music Playback - supports MP3, WMA Lossless, WMA (DRM, Pro and Advanced Profile not supported), Dolby Digital
- Photo Playback - supports JPG/JPEG files
- Subtitle Playback - supports SUB, SRT, SSA, SMI
- USB HOST - direct playback files from USB disk and external USB HDD
- Card Reader - supports memory cards: SD/MMC

Note: All the information in this manual were correct at the time of publication. However, as our engineers are always updating and improving the product, your device's software may have a slightly different appearance or modified functionality than presented in this manual.

1.2 Packing List

Part	Quantity
FANTEC R2450	1
A/V cable	1
USB cable	1
Remote Control	1
AC/DC adaptor	1
CD (with User Manual and format tool)	1
Quick Start Guide	1

Note:

The actual contents in the package might be different from the packing list in this manual.

1.3 Caution

1.3.1 Usage cautions

User should not modify this player. If commercial hard disk is being used, the environmental temperature should be within +5°C ~ +35°C.

1.3.2 Power

The player's power voltage: DC 12V.

When using this player, please connect the supplied AC adapter or AC adapter cable to the player's power jack. When placing the adapter cable, make sure it can not get damaged or be subject to pressure. To reduce the risk of electric shock, unplug the adapter first before cleaning it. Never connect the adapter to the player in a humid or dusty area. Do not replace the adapter or cable's wire or connector.

1.3.3 Radio interference/compatibility

- If not properly shielded, almost all electronic devices will get radio interference. Under some conditions, your player might get interference.
- The design of this player has followed the FCC/CE standard, and has followed the following rules:
 - (1) This player may not cause harmful interference;
 - (2) This player could accept some interference received including interference that may cause undesired operation.

1.3.4 Repair

If the player has a problem, you should take it to an appointed repair center and let the specialists do the repair, never repair the player yourself, you might damage the player or endanger yourself or your data.

1.3.5 Disposing of the player

When you dispose of the player, be sure to dispose it appropriately. Some countries may regulate disposal of electrical device, please consult with your local authority.

1.3.6 Hard disk cautions

The player uses an internal hard disk for data storage, in normal case, format or repair is not required.

You should carefully read the < Frequently Asked Questions > chapter, and check our website for latest information before formatting the hard disk.

- Physical impact may create bad sector in the hard disk, you can use CHKDSK to fix the problem.
- All data stored in the player may be lost due to physical impact, electrical shock, power lost, HDD format etc. Please backup your data.
- It is suggested to do defragment after a long period of usage.
- Regularly backup the data in the hard disk so that it can be recovered in the event of data corruption or loss. Our company takes no responsibility for loss of data stored on the hard disk.

1.3.7 Others

When using this player, please do not let the player come into contact with water or other liquid, if water is accidentally spilled on the player, please use a dry cloth to absorb the spillage.

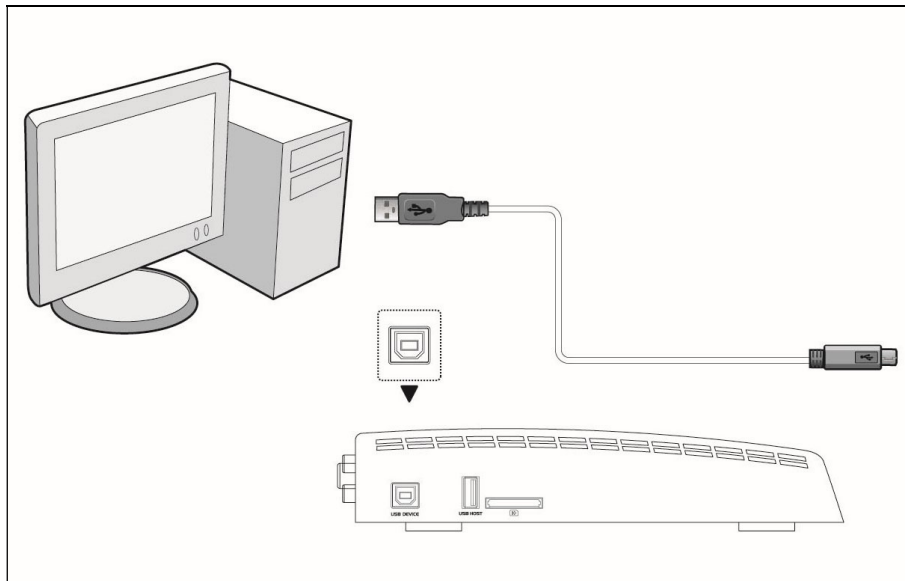
Electronic products are vulnerable, when using please avoid shaking or hitting the player, and do not press the buttons too hard.

- ✧ Do not let the player come into contact with water or other liquid.
- ✧ Do not disassemble the player, repair the player or change the design of the player, any damage done will not be included in the repair policy.
- ✧ Avoid hitting the player with hard object, avoid shaking the player, and stay away from magnetic fields.
- ✧ During electrostatic discharge and the strong electromagnetic field, the product will malfunction, then unplug the power cable and the product will return to normal performance next time it is powered on.

1.4 Connection

1.4.1 Connect to Computer

- (1) Make sure the player is powered on;
- (2) Plug in the squarish connector of the USB cable to this player's USB DEVICE port;
- (3) Plug in the rectangular connector of the USB cable to computer.



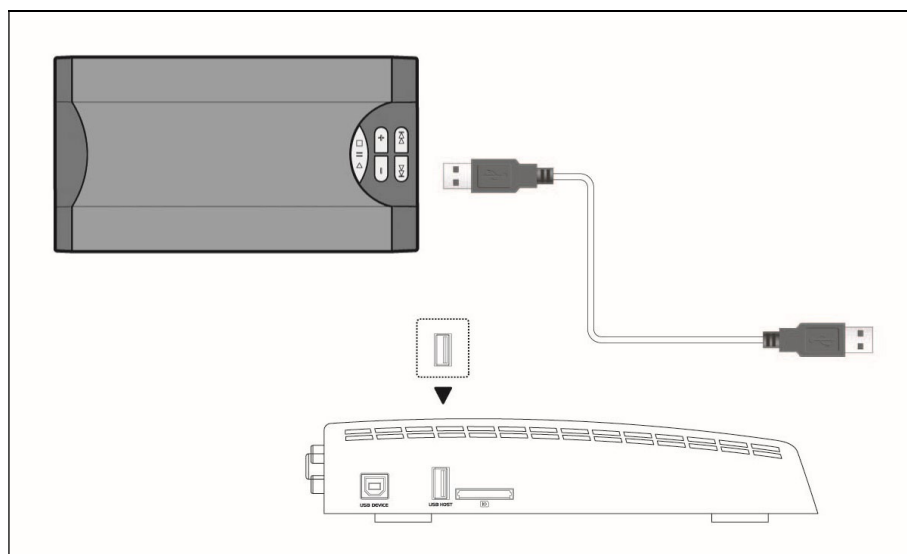
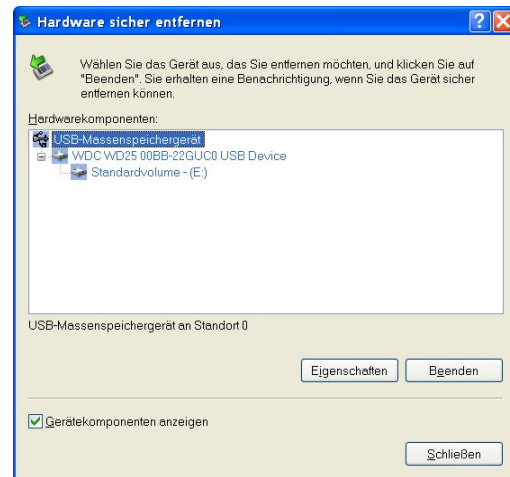
1.4.2 USB Mass Storage Device (like USB Pen Drive, MP3, USB HDD etc.) Connection

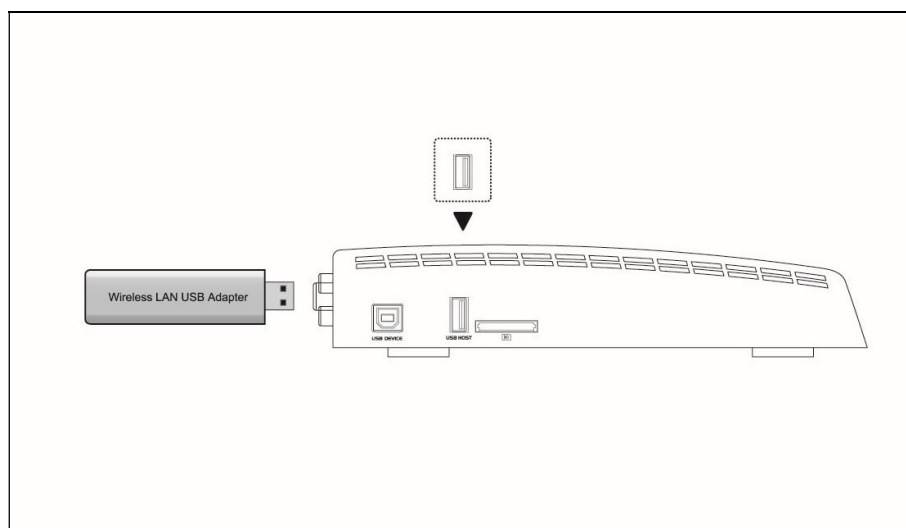
- (1) Make sure the player is powered on;
- (2) Plug in the USB Pen Drive or USB HDD etc. to the USB host port of this player.

Important:

If your HDD is formatted with NTFS file system, please do not forget to unmount it before removing from PC. Otherwise the R2450 will not recognize the HDD.

- 1) Click the green icon at the right down corner.
- 2) Click the popup to remove the device .

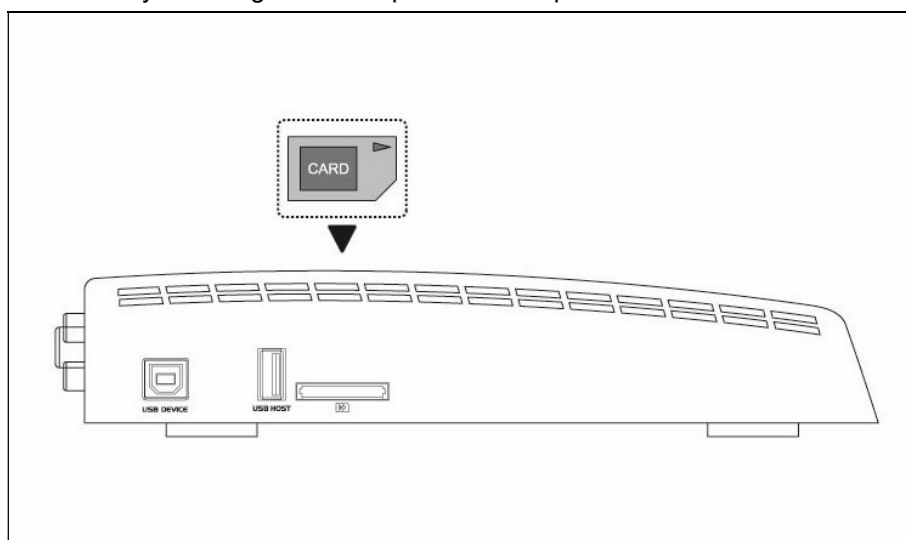




1.4.3 Memory card connection

Memory card can be used by inserting to the card slot.

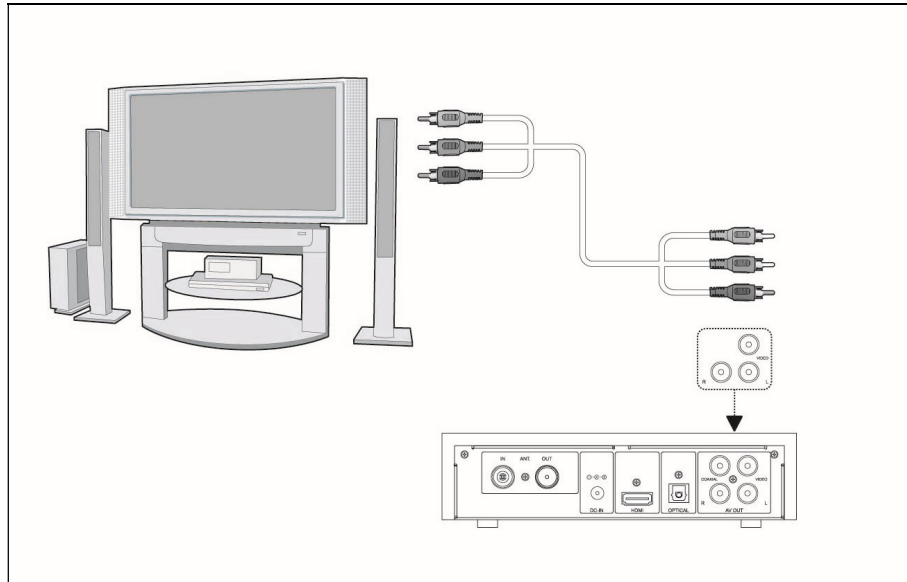
- (1) Follow the picture to insert the memory card to the card slot properly;
- (2) Insert the card by following the arrow pointer in the picture.



1.4.4 TV connection

1.4.4.1 A/V OUT

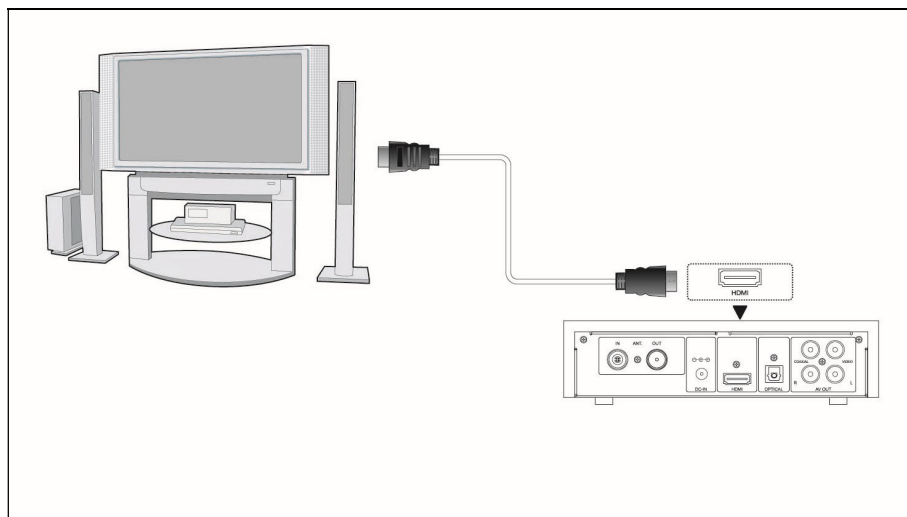
- (1) Follow the picture and plug in the 3 color connector to the player's A/V OUT jack;
- (2) Follow the picture and plug in the 3 color connector to the TV's A/V IN jack.



In this way, you can also enjoy videos, music, and photos in the player on TV.

1.4.4.2 HDMI OUT

- (1) Follow the picture and plug one connector on your HDMI cable to the player's HDMI jack;
 - (2) Follow the picture and plug the other connector on your HDMI cable to the TV's HDMI jack.
- (HDMI cable is not supplied)

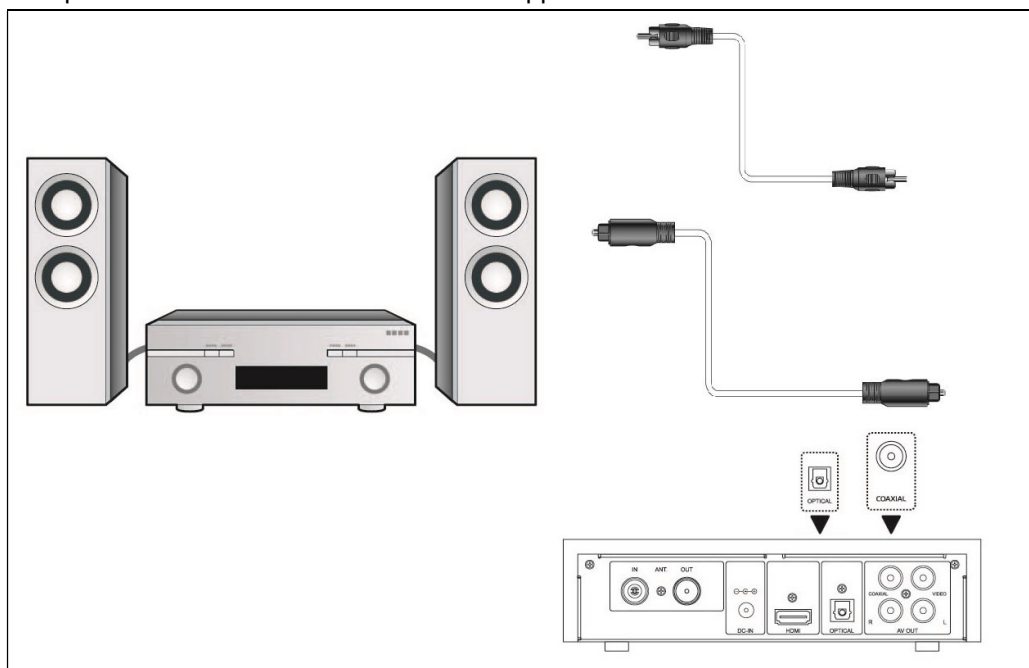


In this way, you can have the highest quality video and audio via a single cable.

1.4.5 Connecting to an Digital Amplifier

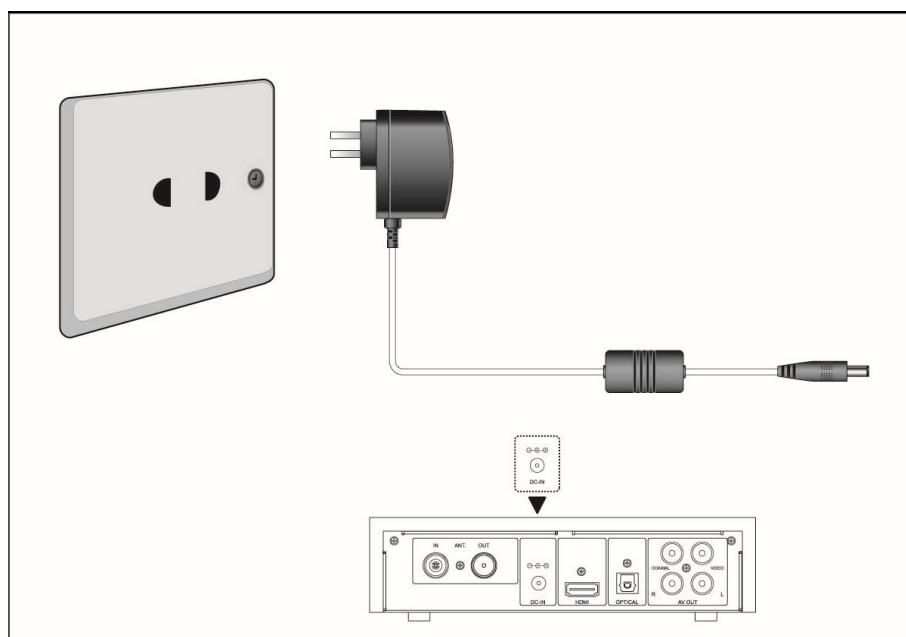
- (1) Follow the picture and plug in the RCA connector on your coaxial cable to the player's Coaxial jack. Or if you use optical fiber, please plug in the Toslink connector on your optical fiber to the player's S/PDIF Optical jack;
- (2) Follow the picture and plug in the other connector on your coaxial cable or optical fiber to the digital audio device (digital amplifier or decoder).

Note: Optical fiber and coaxial cable are not supplied.



1.4.6 Power connection

- (1) Follow the picture and connect the AC adaptor to the player's DC IN jack;
- (2) Follow the picture and plug in the AC adaptor to the power outlet.



1.5 First Time Usage

1. Hard disk format

At first you must format the hard disk of the FANTEC R2450 at a PC. Format your HDD in NTFS (without recording function) or in FAT32 with a FAT32 format tool, like Swissknife or EASEUS Partition Master.

2. Power on

After connected to power, the indicator of the POWER LED on the front panel will turn on (red light). When push the POWER button on the remote control will power on the player. During startup, the indicator light is flashing blue, after the player is ready, the indicator will stay blue.

3. Power off

To power off the unit, press the POWER button on the remote control. When power off the player, it will prompt you that the system is shutting down. After the system is shut down, the indicator light of the POWER button on the front panel will turn red.

4. Language control

The system language of this player can be set to English or other languages. In setup interface, the selected language will take effect immediately.

2. About the Player

2.1 Remote Control

All procedures in this manual can be carried out using the remote control buttons.

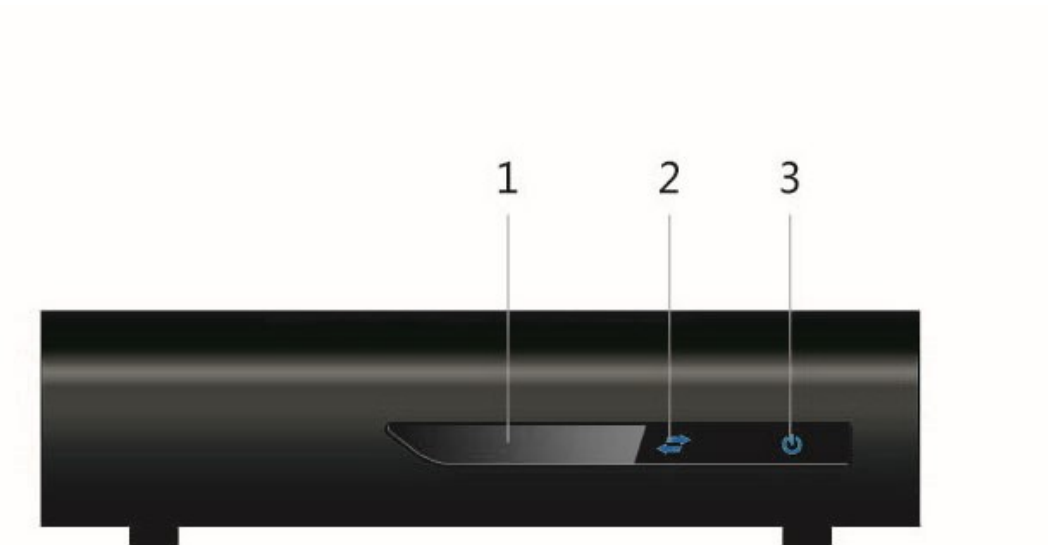
See the following for details on each button and its function:



No.	Button	Function
1	POWER	Press 1 sec to enter standby mode or wake up.
2	TV SYSTEM	Switch video output mode. (480P, 576P, 720P, 1080I, 1080P)
3	SETUP	Enter the setup menu
4	DEVICE	Enter DEVICE selection (USB, HDD, Card Reader)
5	SLOW	Enter slow motion when playback
6	INFO	Press to hide or display the information bar during playback.
7	ZOOM	Press to zoom out/in the photo, Press to zoom in the video

8	SUBTITLE	Turn on/off subtitle
9	REPEAT	Setup the repeat mode.
10	FR	During video/audio playback, press this button to fast rewind
11	PLAY/PAUSE	Playback/Pause
12	HOME	Press this button to return to the main interface.
13	LEFT/RIGHT/ UP/DOWN	Move cursor to the left./right/up/down Rotate the photo.
14	ENTER	Press ENTER button to confirm
15	VOL-/VOL+	Press to decrease/increase the volume.
16	NUMERIC buttons	Press to enter channel numbers.
19	MUTE	Press this button to turn on/off mute function.
20	OPTION	Press to open tool bar.
21	SLIDE	Select to set photo+music slide show.
22	AUDIO	Switch audio channels.
23	FF	During video/audio playback, press this button for fast forward.
24	STOP	During playback, press this button to stop the playback.
25	RETURN	Press to go back to the previous screen when navigating menus.
26	PREV/NEXT	In file list mode, press this button to return to the previous/next file list. In playback mode, press this button to playback the previous/next media file.
27	REC	Press to begin recording. Press 2x to hide the REC bar.
30	TXT/YELLOW	While in the Record list menu, press to edit the task.

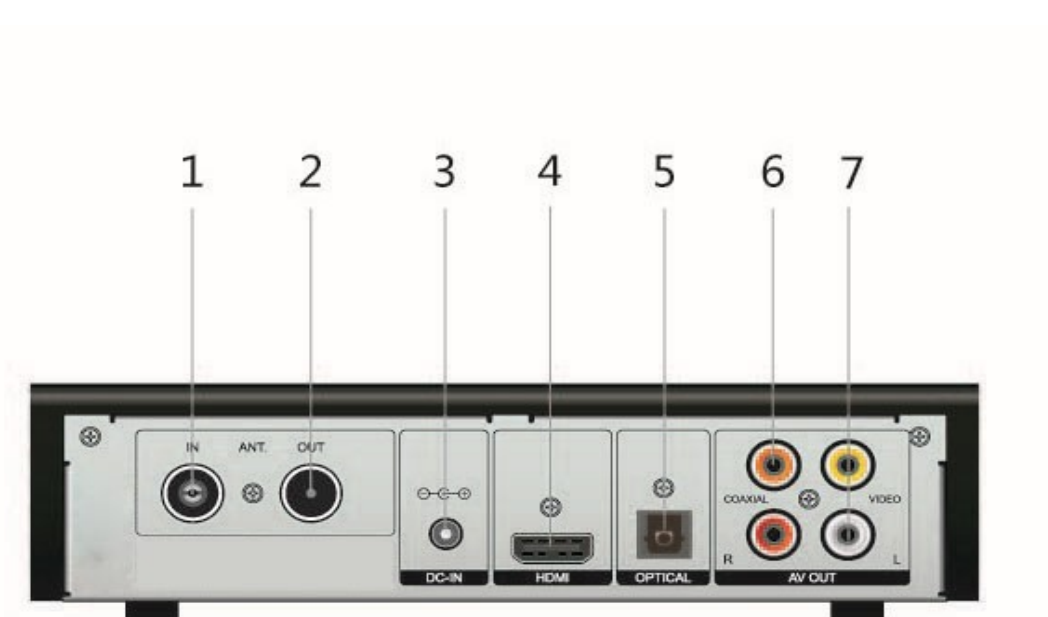
2.2 Front Panel



- 1. IR receiver
- 3. POWER LED

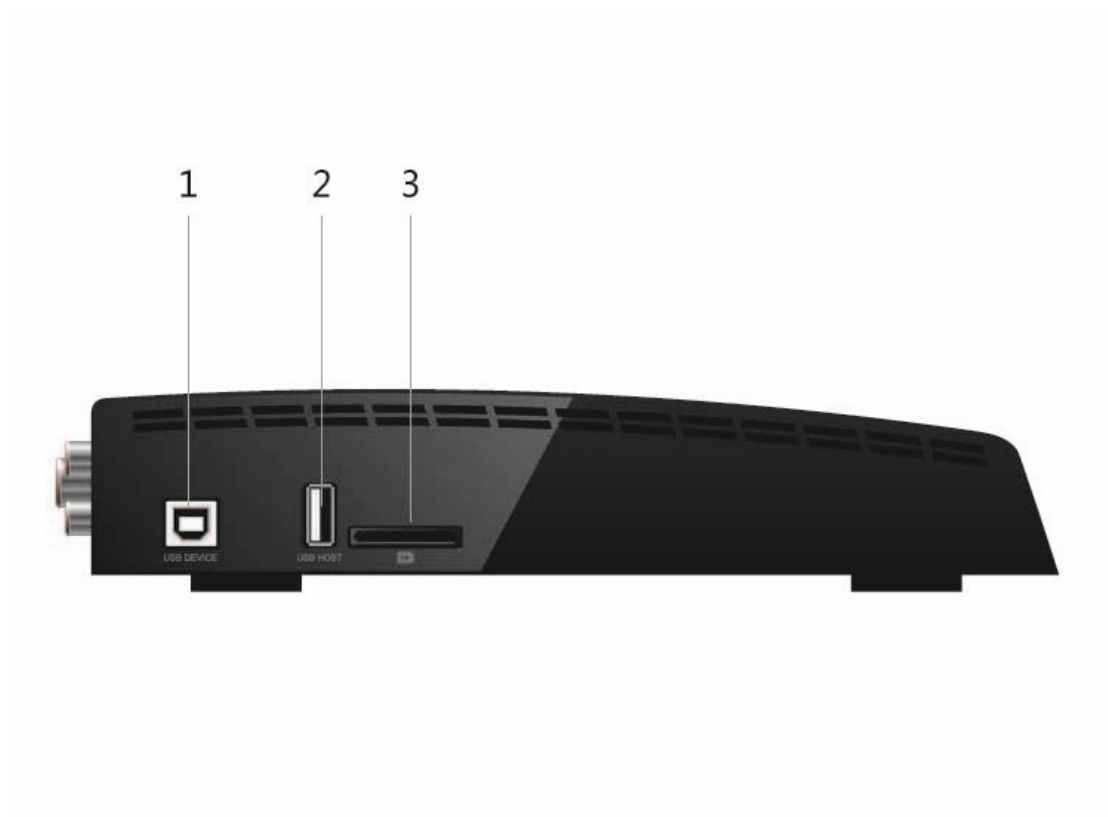
- 2. Record LED

2.3 Rear Panel



1.	2.
3. DC IN jack	4. HDMI jack
5. S/PDIF OPTICAL jack	6. S/PDIF COAXIAL jack
7. A/V OUT jack (red/white - R/L audio, yellow - video)	

2.4 Side Panel



1. USB DEVICE port (Type-B)

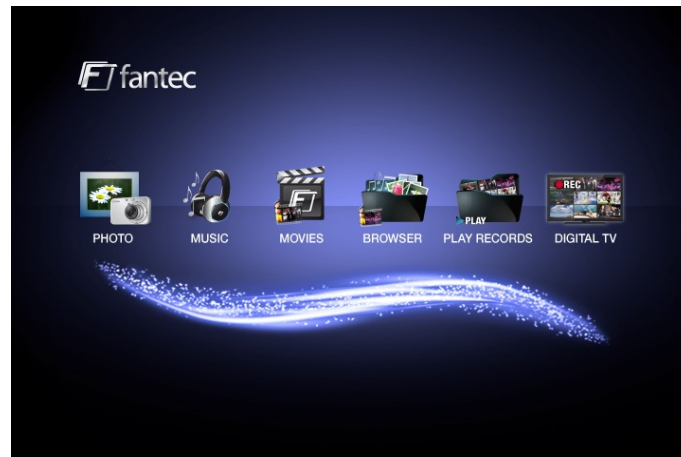
2. USB HOST port (Type-B)

3. Card slot

3. Functions

3.1 Main Interface

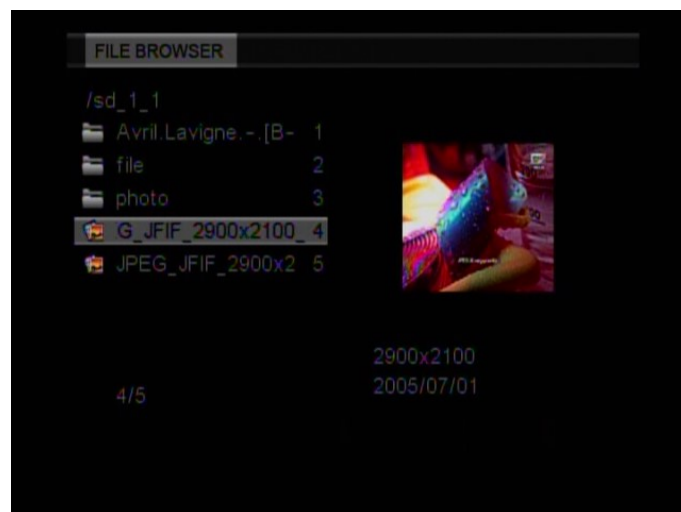
The main interface contains: PHOTO, MUSIC, MOVIE, BROWSER, MY RECORD and DVB-T.



3.2 Photo Playback

Enter the Photo menu, to display the supported image files and folders. Please go to **SETUP /**

Slide Modes to select your preferred display. The player supports JPG / JPEG files.



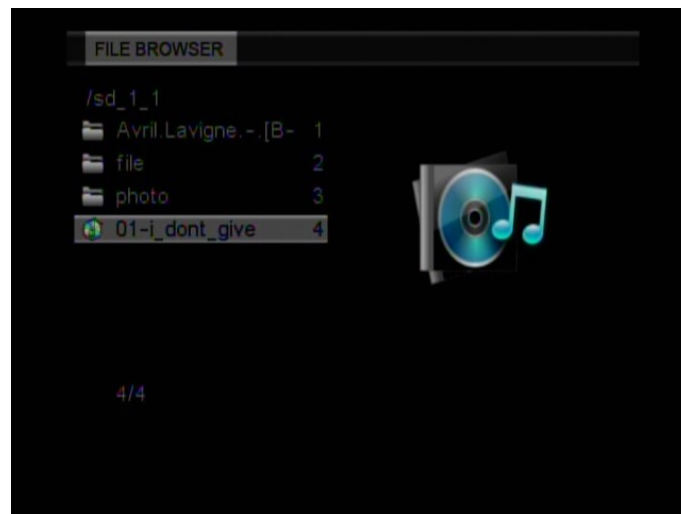
Select an image file to open the file. You can change the slideshow setting in Setup.

You can use the following functions during playback:

- **Direction Button:** Press UP/DOWN/LEFT/RIGHT button to change the view (Rotate, Flip Vertical or Horizontal).
- **ZOOM:** Press this button to activate the zoom mode.
- **REPEAT:** Select to choose between **TRACK**, **FOLDER** and **ALL**.
- **SLIDE:** Press this button to activate the slideshow mode with background music.
- **STOP:** Press this button to stop the playback and return to the photo menu.
- **OPTION:** Press this button to open tool bar.

3.3 Music Playback

Enter the Music menu, to display the supported audio files and folders. This player supports MP3 and WMA audio files.



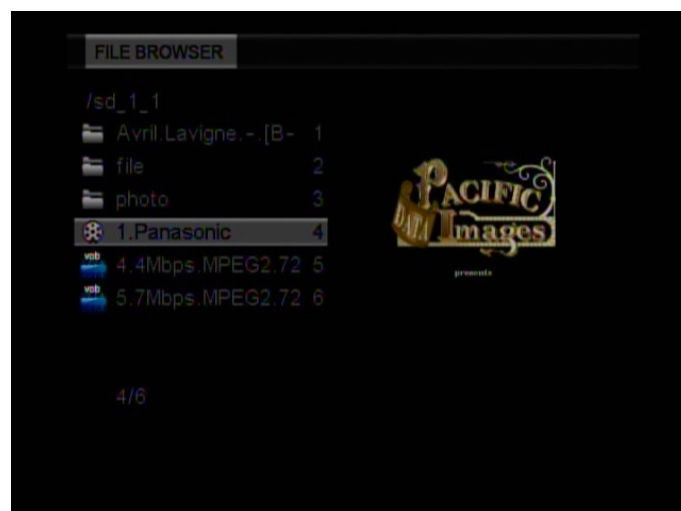
Select an audio file to start playback.

You can use the following functions during playback:

- **PLAY/PUASE:** Press this button to play/pause the playback.
- **FR/FF:** Press to fast reverse/fast forward the current playback. Press repeatedly to select speed (2x/4x/6x/8x/16x/32x).
- **REPEAT:** Select to choose between **TRACK**, **FOLDER** and **ALL**.
- **STOP:** Press to stop the playback and return to the audio menu.
- **OPTION:** Press to open tool bar.

3.4 Movie Playback

Enter the Movie menu, to display the supported movie files and folders. This player supports DAT, VOB (DVD), AVI, MPG, Dvix and Xvid video files.



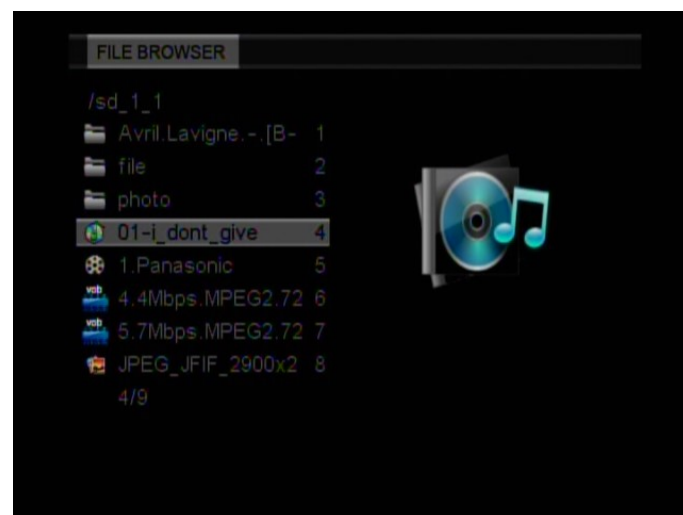
Select a video file to start playback, due to size of the video, the loading process might take a while.

You can use the following functions during playback:

- **PLAY/PAUSE:** Press to play/pause the playback.
- **FR/FF:** Press to fast reverse/fast forward the current playback. Press repeatedly to select speed (2x/4x/6x/8x/16x/32x).
- **REPEAT:** Select to choose between **TRACK**, **FOLDER** and **ALL**.
- **AUDIO:** Press to switch the audio channel.
- **Subtitle:** Press to turn on/off the subtitle.
- **OPTION:** Press to open tool bar.
- **STOP:** Press to stop the playback and return to the movie menu.

3.5 Browser

Enter the Browser menu, to display all supported video/audio/image files and folders. In this menu you can access all the functions corresponding to each file type.



3.5.1 DVD Playback

DVD DISC files stored on the portable HDD can be played directly on the player. Enter the DVD folder, make sure the cursor stop on **VIDEO_TS**, press the **Play** button on the remote control and begin playback.



Press the navigational buttons to select options while navigating the DVD root menu.

You can use the following functions during playback:

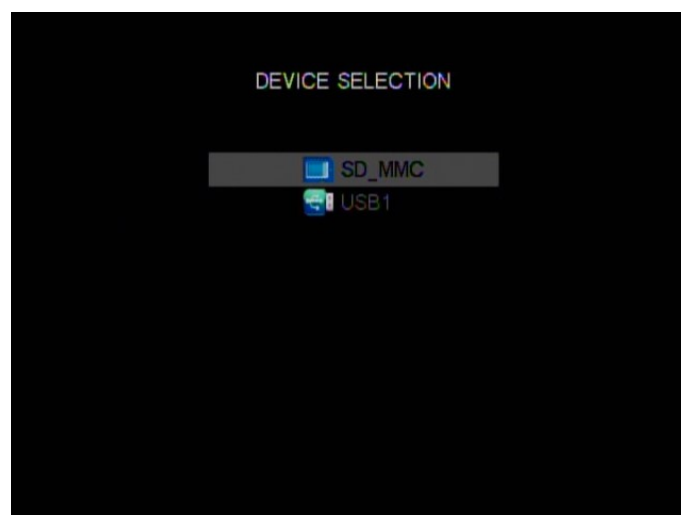
- **HOME:** Press to return to the root menu during playback.
- **OPTION:** Press to activate/hide the tool bar during playback.
- **PREV/NEXT:** Press to go to previous/next chapter.
- **STOP:** Press to stop the playback.

With the buttons in the tool bar, you can switch the audio languages, subtitles, etc.

Note: The VIDEO_TS and AUDIO_TS folder need to be copied into the same DVD folder on your HDD. If no AUDIO_TS folder is present at your DVD, please create it yourself afterwards.

3.6 Storage device

In the main menu, press the **DEVICE** button on the remote control to enter the storage device selection menu. If there is more than one partition on your device, you can select the specific partition you want.



3.7 Setup Menu

The Setup Menu allows you to configure language, video, photo, audio and auto play settings. Press **SETUP** button on the remote control to enter the menu.

3.7.1 LANGUAGE SETUP

Select LANGUAGE SETUP to setup OSD LANGUAGE and ENCODING style.



OSD LANGUAGE	Select and change the system language into English, French, German, Italian, Spanish, Portuguese, Dutch, Polish, Russian, Slovak, Czech.
ENCODING	Select to set text encoding.

3.7.2 DISPLAY SETUP

Select DISPLAY SETUP to setup TV STANDARD, DISPLAY TYPE CONTRAST and HDMI RESOLUTION.



TV STANDARD	NTSC, PAL , AUTO
DISPLAY TYPE	4:3 PS, 4:3 LB, 16:9
CONTRAST	-4,-3,-2,-1,0,+1,+2,+3,+4
HDMI RESOLUTION	480P, 576P, 720P, 1080i, 1080p

3.7.3 PHOTO SETUP

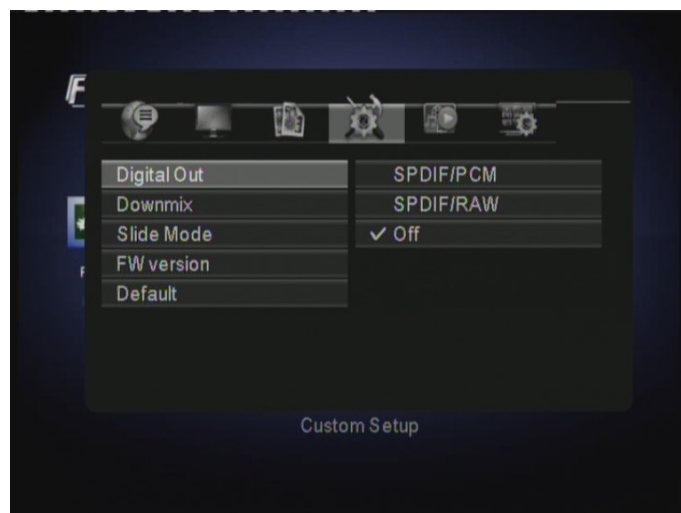
Select PHOTO SETUP to setup INTERVAL TIME, TRANSITION EFFECT, SHOW TYPE, COLOR TONE and BROWSE.



INTERVAL TIME	5 Sec, 10 Sec, 15 Sec, 30 Sec, 1 Min, 3 Min, Off
TRANSITION EFFECT	Select to set the transition effect for photo slide show.
SHOW TYPE	Fit Screen, Full Screen
COLOR TONE	Normal, Black & White, Classic
BROWSER	Thumbnail, File Manager

3.7.4 Custom SETUP

Select Custom SETUP to setup DIGITAL AUDIO MODE, SLIDE SHOW MODE, FW VERSION and DEFAULT.



DIGITAL AUDIO MODE	SPDIF/PCM, SPDIF/RAW, OFF
Downmix	Lo/Ro (Left only / Right only), Lt/Rt (Left / Right)
SLIDE SHOW MODE	FOLDER, ALL FILES
FW VESION	Show the FW version
DEFAULT	Select to restore factory defaults.

3.7.5 AUTO PLAY SETUP

Select AUTO PLAY SETUP and you can setup AUTO PLAY in PHOTO, MUSIC and MOVIE.

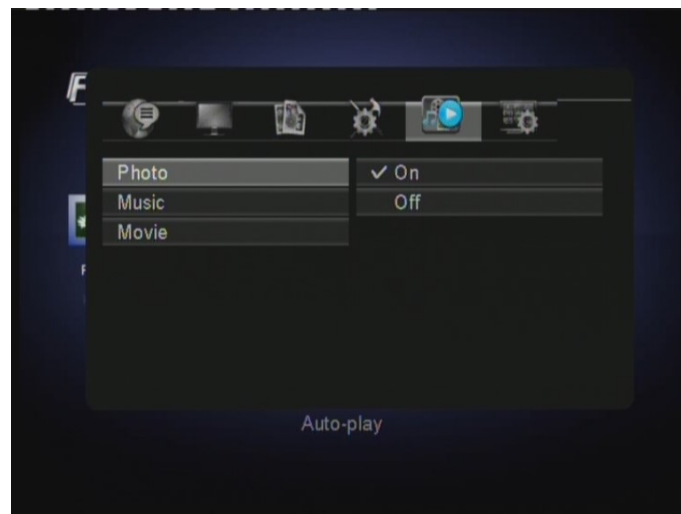


PHOTO	ON, OFF
MUSIC	ON, OFF
MOVIE	ON, OFF

3.7.6 DVB-T SETUP

You cannot access this option via SETUP directly. Please go to the DIGITAL TV menu, press **SETUP** to enter the DVB-T setup menu (only in the DIGITAL TV interface, you can enter this menu). In this menu, you can setup Country, Language, GMT Usage, Time Zone, PVR Device, Sort, Automatic Search and Manual Search.



After the very first installation is done, you can use the following functions:

Country	Press ENTER to select the country menu.
Language	Press ENTER to enter the language menu.
Time Zone	Select the time zone
PVR Device	Enter the select the record device

Sort	By Name, By Service ID, By Channel No.
Automatic Search	Enter the Automatic Search menu
Manual Search	Enter the Manual Search menu

4. Upgrading the Firmware

The firmware is the operating system (OS) installed on the device. Firmware upgrades can bring new features, improvements and bug fixes.

Download the latest firmware from www.fantec.de.

Step 1: Prepare the Memory Card / USB pen

You will need a Memory Card / USB pen for firmware upgrade. Make sure that the device is empty! After that copy the "UP*.AP" file to the root directory of the device. Do not change the file name.

Step 2: Power on the FANTEC media device and connect it with TV.

Step 3: Connect the Memory Card / USB pen

Plug the Memory Card / USB pen into one of the slots of the media device.

Step 4: Enter PHOTO, MUSIC, MOVIE or BROWSER in the main interface

Firmware installation will then start. You will see a short message "Upgrade flash..Erase.." on the left upper corner on the TV screen.

Please wait for about 1 minute until the installation is completed. Then the device will turn off itself.

Note:

Do not turn off the power during installation.

Do not unplug the Memory Card / USB pen during firmware installation.

5. Appendixes

5.1 Specifications

Technical Specifications

Video	Format: AVI, VOB, MPG, DAT
	Codec: MPEG-1, MPEG-2, Divx, Xvid
	Resolution: Up to 720x576 (PAL), 720x480 (NTSC)
	Subtitle: SRT, SSA, SMI
Audio	Format: MP3, WMA (DRM, Pro and Advanced Profile not supported)
	Codec: MP2, MP3, PCM, LPCM
	Compression rate: MP3: 32 Kbps~320 Kbps; WMA: 32 Kbps~192 Kbps
Photo	JPG/JPEG (720p/1080i)
	Slide Show and zoom support
A/V Output	Video: Composite, Component, HDM I (Version 1.1) up to 720p/1080P
	Audio: HDMI, S/PDIF Optical, S/PDIF Coaxial
TV System	PAL, NTSC, Auto
USB Interface	USB 2.0 DEVICE port x 1
	USB 2.0 HOST port x 1
Card Reader	SD/MMC
Hard Disk	3.5' SATA HDD up to 1TB
File System	FAT32 (recommended), NTFS (read only)
Operating Temperature	+5°C to +35°C
Power	AC-DC Adapter 12V, 1.5A
Dimension (WxDxH)	180 x 228 x 44 mm

Note: The specifications and design of this product are subject to change without notice.

5.2 Frequently Asked Questions

Question 1. What kind of file format do I have to use on my device?

Answer:

In order to use the record function, please use the FAT32 file system. The device can read from NTFS formatted HDDs, but it cannot record on NTFS formatted HDDs. To format your HDD, please use a third party FAT32 formatting tool.

Question 2. My computer does not recognize my player.

Answer:

- (1) Make sure the player is powered on. If it is off, the computer will not be able to find the player;
- (2) Make sure the player is connected to computer. (Refer to 1.4.1 for connecting player to computer);
- (3) When using Windows 98SE, install the USB driver first. After installation, restart the computer. Then reconnect the player to the computer. (Refer to 1.4.1 for connecting player to computer);
- (4) If you installed the Windows 98SE driver over your Windows® XP, 2000, or ME edition, problems might occur;
- (5) It is not recommend using the USB ports in the front of your computer, try to use the USB ports in the rear, because the USB ports in the front are often from non-powered hubs.

Question 3. When I try to disconnect the USB device, I keep on getting “The device ‘Generic volume’ cannot be stopped right now. Try stopping the device again later.” message, what should I do?

Answer:

Close any program that might be accessing data on the player, including Windows® Explorer. If it does not work, close all programs and wait for another 20 seconds, then try the green arrow icon again. If it still does not work, you should shut down the player and disconnect the USB cable.

Question 4. I find new file names and folder names that I never created before or they have strange gibberish names.

Answer:

Most likely, the player's file allocation table (FAT) has been corrupted. This might be due to the player shutting down (due to low battery power) while reading or writing to your computer by the USB connection. Windows and Macintosh often write extra files to the hard disk such as finder.def or System volume info. These are normal and will not do any harm to the player.

Question 5. I used my player to transfer files back and forth between different computers. Will defragmenting the player hard disk do any harm to it?

Answer:

Defragmenting the player hard disk may be useful after having transferred many files to and from the player. It is never harmful to use the defragment on the player. Make sure no other programs are running while using the Windows® defragment utility. Make sure you have connected the player with the external power adapter during this procedure.

Question 6. My files have disappeared from the player.

Answer:

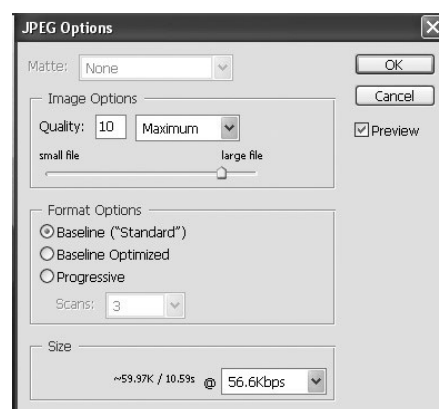
Make sure that you browse your files via the correct Browser mode which means correct filtered views such as Photos, Music, or Movies.

Question 7. Why do some supported photo formats, cannot be shown in the photo function?

Answer:

In the JPEG format there are different modes. The player doesn't support all the modes. So you have to change your photo format first as follow:

- (1) Use Photoshop to open the photo;
- (2) Choose "File" then "save as" from the menu, as the picture on the left hand side shows, select the picture format as JPEG, input the file name and click the "save" icon;
- (3) After click on the "save" icon, a new window will appear as the picture on the right hand side shows, select "Baseline (standard)" or "Baseline optimized";



- (4) Click the "OK" icon.

5.3 Copyrights and Trademarks

Copyrights

All rights reserved. No part of this manual may be reproduced, or transmitted in any form or by any means, whether by electronically or mechanically, without the express written permission from the copyright holder.

Copyrighted materials, such as software, music files, or movies, are protected by local law, and may not be illegally copied or used without permission from the copyright owner.

Trademarks

Microsoft and Windows are registered trademarks of Microsoft Corporation.

All other trademarks are property of their respective holders.

5.4 Warranty

What your warranty *does not* cover:

- Acts of nature, such as fire, static discharge.
- Damage from unauthorized repair, alteration or accident.
- Damage from misuse or neglect.
- A unit that has been modified or incorporated into other products or is used for institutional or other commercial purposes.
- Loss of customer's software, firmware, information, or memory data.
- Improper handling or installation.