

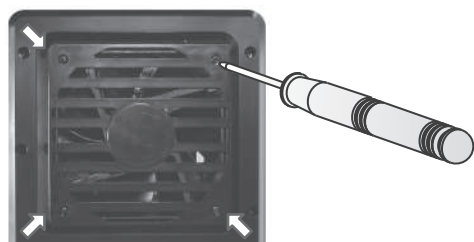
6
STEP

Trouble Shooting

A If the FANTEC QB-35U31 (HDDs installed) is connected to the PC with Type-C Cable and the PC does not recognize these SATA HDDs, please update the drivers of your USB-C controller.

B If the FANTEC QB-35U31 (HDD installed) takes too long to detect HDDs, please check if the HDD is securely installed or update the driver version.

C If too much noise is coming from the fan, unscrew and take out the fan cover, unplug the power cord, clean the fan and assemble it back.



If the noise is still persistent, replace the fan. The fan size is 80x80x20mm 2 pins.

D If you forget to attach the metal frame before you close the cover, simply press the tab on the bottom of the cover. The lid will slowly release and open outwards. Please do not attempt to lever out the cover with something sharp.



E To remove the HDD from the device, slightly press down on the handle and pull it out.



7
STEP

Note

A The USB port on your PC must support power-off function so that the device can go into sleeping mode. In order to enable that you need to set up the power management of your motherboard accordingly. For more details, please refer to the BIOS settings section in the user manual of your motherboard.

B The Smart Fan is controlled by a built-in thermal sensor and offers 2 setting variations (auto / manual) and 3 levels of speed:

Low	below	45°C	1200 U/ min.
Medium	between	45°C~55°C	1800 U/ min.
High	hotter than	55°C	2500 U/ min.

C Simply press the POWER button to switch on your device and hold the button for 3 seconds to switch it back off.

D Operating system: Windows 7 / 8.1 / 10
Mac OS 10.x, Linux

E Maximum HDD capacity: There is currently no limit (tested with 10TB per HDD (Date: 1.2018))
4 separate HDDs are being displayed on the PC.

F USB 3.1 Data transfer up to 10 Gbit/s

G Hot-Plug for USB connection

H USB 1.1 / 2.0 / 3.0 compatible

Operation Environment:

- Temperature : 0°C~ 60°C
- Humidity: 0%~ 90% R.H.

8
STEP

2,5 Bracket (additionally available)

Note: Suitable for SSDs und HDDs of 7 mm and 9,5 mm height, not suitable for 15mm height.

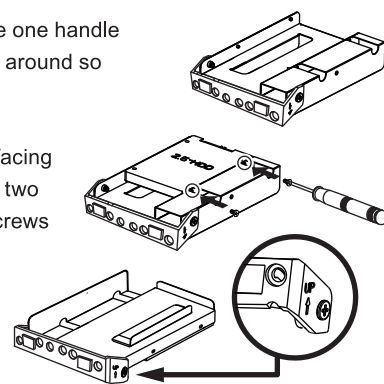
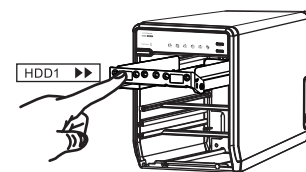
1. To mount your SDD/HDD remove one handle from the enclosure and turn it to be around so it's facing backwards.

2. Make sure hard disk of pins are facing upward, one end is embedded with two ribs, and one end is secured two screws with attached screw driver.

3. Turn bracket upside down.

4. Insert 4 sets of bracket with HDD/SSD assembled as step 2 & step 3 into chassis.

5. Close door and you're ready to use.



Adress for warranty return shipments:
FANTEC GmbH
Department RMA/Service
Billwerder Billdeich 605B
21033 Hamburg / Germany

Declaration of conformity:
<http://www.fantec.de/unternehmen/bestimmungenrichtlinien/ce/>

?

Please contact our support department with any questions!



www.fantec.com • www.fantec-forum.com



Deutsch: service@fantec.de
English: support@fantec.com
Español: soporte-tecnico@fantec.com
Italiano: supporto-italia@fantec.com

fantec

1
STEP

Diagram



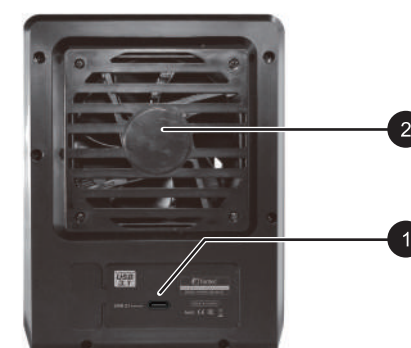
A FRONT PANEL



DESCRIPTION

- | | |
|--|--|
| ① Blue | Power on |
| Orange | Standby |
| ② USB | on/off line |
| ③ Smart Fan automatic mode | |
| ④ Smart Fan manual mode | |
| ⑤ Fan speed | Level 1 |
| ⑥ Fan speed | Level 2 |
| ⑦ Fan speed | Level 3 |
| ⑧ Synchronisation | 2 modes : |
| Orange | When de PC is off, the device goes to sleeping mode. |
| Off | Synchronisation is off. |
| ⑨ Power | Press 3 seconds to power off the device. |
| ⑩-⑬ | HDD1 / HDD2 / HDD3 / HDD4 active |
| ⑭ Smart Fan switch: auto, manual and fan speed from level 1 to level 3. | |
| ⑮ Synchronization mode switch. | |
| Button 15 need to be pressed for 3 seconds to switch the mode of the device. This design will prevent accidental execution of these functions. | |

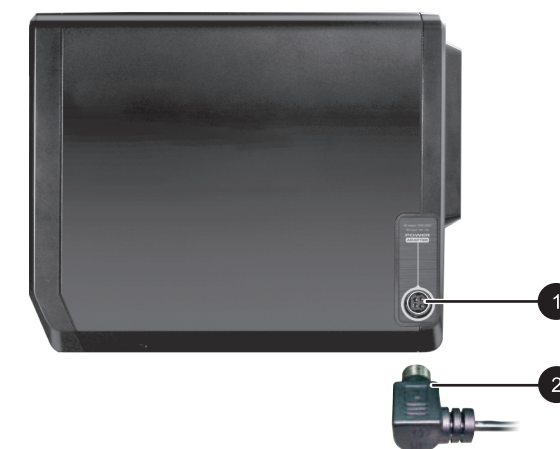
B REAR PANEL



DESCRIPTION

- ① USB 3.1 port
- ② Smart Fan

C SIDE PANEL right



DESCRIPTION

- ① DC Jack
- ② DC Power

D HDD HANDLE



E FRONT COVER



F METAL FRAME



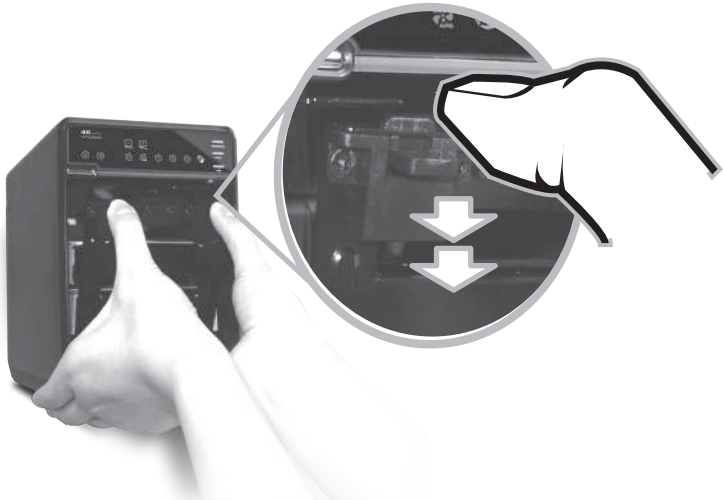
- A** Please use the provided handles to secure the 4 HDDs with screws.



- B** Press the circular deepening to open the cover.



- C** Press down the lever to detach the metal frame and remove it.



- D** Take the transport card board out to the device.



- E** Slide the 4 HDDs into the enclosure and make sure they are securely installed in order from up to down.

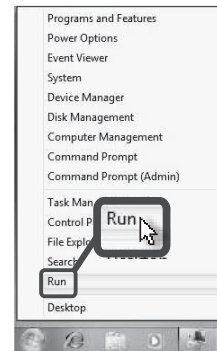


NOTE: Make sure the HDD1 is securely installed in slot 1. Otherwise the PC may not recognize the device. The content of slot 2-4 may vary.

- F** Put the metal frame that was removed back into the enclosure and close the cover (based on how it was opened in Step 2).

- G** Connect the FANTEC QB-35U31 to the power adapter.
In this order:
1.) Connect power supply to enclosure.
2.) Connect power supply to socket.
Plug in the USB on the rear panel and switch on the device.

- H** If the HDD is unformatted, you have to initialize it on your PC.
Please run the steps as followed: First click "start", "execute" on a Windows PC and type in "diskmgmt.msc". After that please press the "RETURN" key.

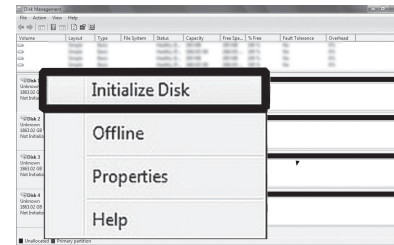


To format a new HDD please follow the steps below:
1. Right-click the Windows logo and then left-click "Run".

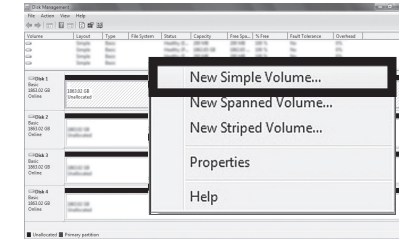


2. If the HDD is uninitialized, you may have to initialize it.
Type "diskmgmt.msc" into the "Run" field.
Then press the "ENTER" key.

3. Start disk initialization. Right-click the hard drive icon in question on the left column, then select "Initialize Disk"



4. Create a new partition and format disk.
Right-click the matching partition icon and follow the upcoming instructions.

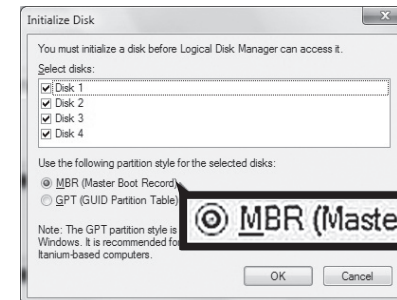


5. HDD format completed.

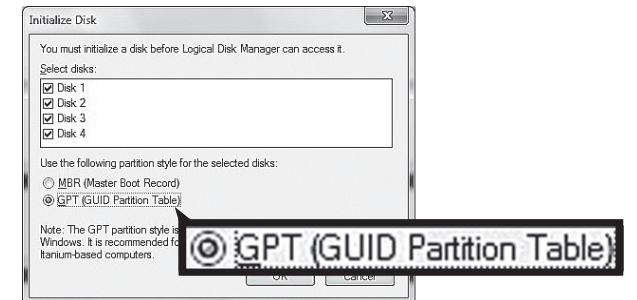
Volume	Layout	Type	File System	Status	Capacity	Free Space	% Free	Health	Overhead
Volume 1	Simple	Basic	NTFS	Healthy	200 GB	199 GB	100 %	No	0 %
Volume 2	Simple	Basic	NTFS	Healthy	200 GB	199 GB	100 %	No	0 %
Volume 3	Simple	Basic	NTFS	Healthy	200 GB	199 GB	100 %	No	0 %
Volume 4	Simple	Basic	NTFS	Healthy	200 GB	199 GB	100 %	No	0 %

Note: Please enable GPT if the total capacity is more than 2TB and enable MBR if the total capacity is less than 2TB.

Activate MBR if total volume is less than 2TB.



Activate GPT if total volume is more than 2TB.



In "Disk Utility" choose to "Erase" or "Partition" disk.

