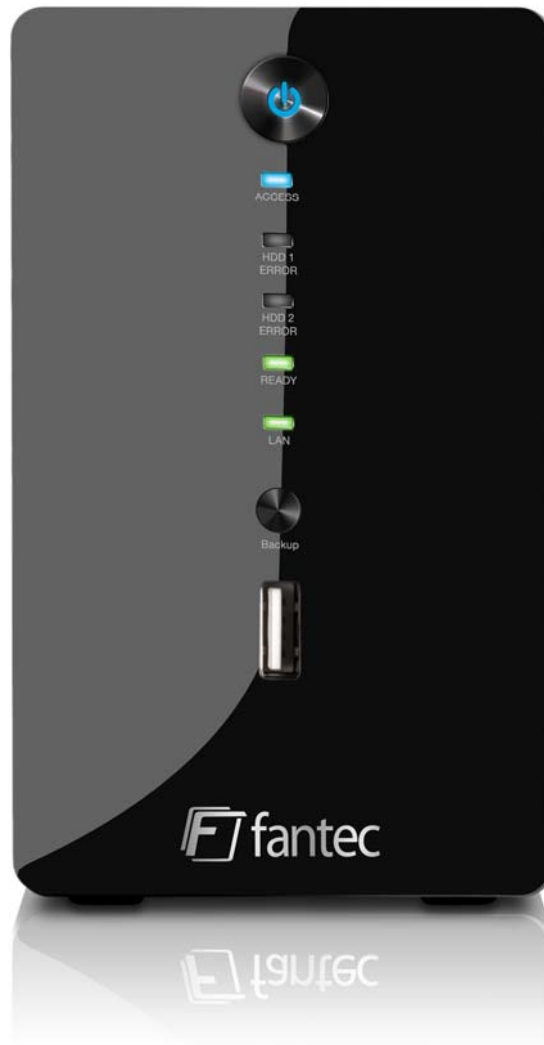


FANTEC GL-35DSR

Network Attached Storage for 2 HDDs



User Manual

EN

Table of Contents

1	Getting Started	1
1.1	About this Device	1
1.2	Package Contents	1
1.3	System Requirements	1
1.3.1	Supported Operating Systems	1
1.3.2	Supported USB Devices	1
1.4	Detailed View	2
1.4.1	Front	2
1.4.2	Rear	3
1.5	Quick Installation Guide	4
1.5.1	Power ON / OFF Procedure	4
1.6	About Data Backup	4
1.7	Before Use	5
1.7.1	Hard Drive Assembly	5
1.7.2	Initializing the NAS System	6
2	NAS Settings and User Interface	9
2.1	How to login	9
2.1.1	Discover Tool	9
2.1.2	Web Browser & Device Name on a PC	10
2.1.3	Safari Web Browser & Bonjour Bookmarks on a Mac	10
2.2	User Interface & Settings	11
2.2.1	Albums	11
2.2.2	Library	12
2.2.3	Preference	13
2.2.4	Applications	18
2.2.5	Registration	20
2.2.6	About	20
3	Network Storage & Extra Features	21
3.1	File Access on a PC	21
3.1.1	Windows Explorer	21
3.1.2	Mapping a Network Drive	21
3.1.3	Disconnecting a Network Drive	22
3.1.4	FTP	23
3.2	File Access on a Mac	24
3.2.1	SMB	24
3.2.2	FTP	25
3.3	BitTorrent Download Manager	26
3.3.1	Starting a Download	26
3.4	Printer Server	27
3.4.1	Installation on a PC	27
3.4.2	Installation on a Mac	30
3.5	Media Server	31
3.5.1	Xbox 360	31
3.5.2	PlayStation 3	32
3.6	iTunes Server	33
3.7	USB Copy	34
4	Appendix	35
4.1	Specifications	35
4.2	Trademarks	35
4.3	Technical Terms	36
4.4	FAQ	36
4.5	Precautions	37
4.5.1	Power on/off precautions	37
4.5.2	Location and placing precautions	37
4.5.3	Electricity and power plug	37
4.5.4	Cables	37
4.6	Important Notices	37
4.6.1	About this Manual	37
4.6.2	Intellectual Property	37
4.6.3	GPL Statement	37

1 Getting Started

1.1 About this Device

The ultra compact design of the GL-35DSR makes this dual-bay network storage enclosure one of the smallest in the market, but it comes with flexibility and performance. Not only does it come with all the standard functions a network drive offers but thanks to RAID protection, all valuable data can be securely backed up and the built-in media server provides streaming of the digital content on the local network. The installation of the 3.5" SATA hard drives is easy and quick, thanks to the screw less design.

Product Dimensions (WxDxH): 8cm x 17cm x 12cm

1.2 Package Contents

- FANTEC GL-35DSR (hard drives not included)
- Power adapter (DC +5V/4.2A +12V/3A)
- Ethernet cable
- Utility CD
- User manual

1.3 System Requirements

- Computer with internet browser and flash player, network access for setup
- Switch or Router with one free Ethernet port for the GL-35DSR LAN
- One or two 3.5" SATA-I or SATA-II hard drives (1.5Gb/s or 3.0Gb/s)
- 80GB -2TB per HDD (for RAID, identical capacities are recommended)

1.3.1 Supported Operating Systems

- PC running Windows XP, Windows Vista or Windows 7
- Mac running Mac OS 10.2 or above

Note

(PC running Windows required to initialize NAS system!)

1.3.2 Supported USB Devices

- USB printers (all-in-one printers are not supported)
- USB drives (mass storage class) or USB flash drives using the FAT or FAT32 file system

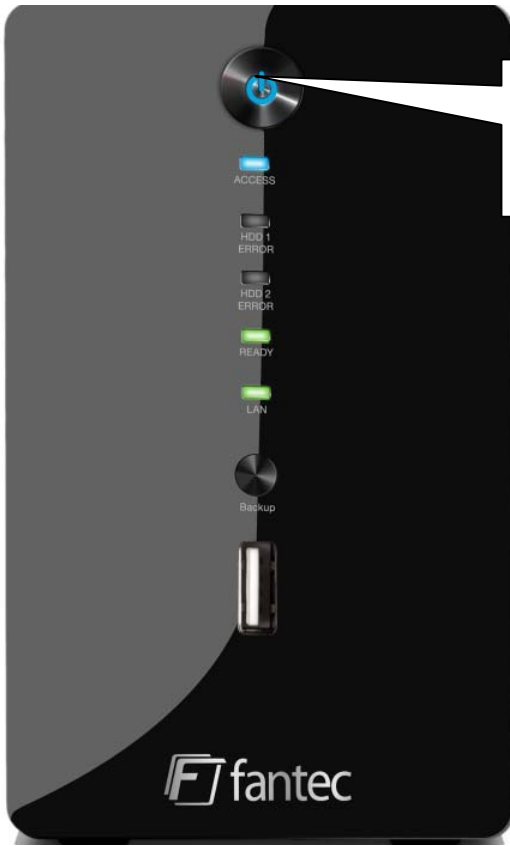
Note

For external USB devices, we recommend using self-powered USB drives. If two bus-powered USB drives are connected at the same time, at least one of them needs to be powered by an external power supply.

MS-DOS, Microsoft, Windows XP/Vista/7 are trademarks of Microsoft Corporation. Apple Macintosh, iTunes and Mac are trademarks of Apple Computer. BitTorrent™ and Torrent™ are trademarks of BitTorrent, Inc. All other third party brands and names are the property of their respective owners.

1.4 Detailed View

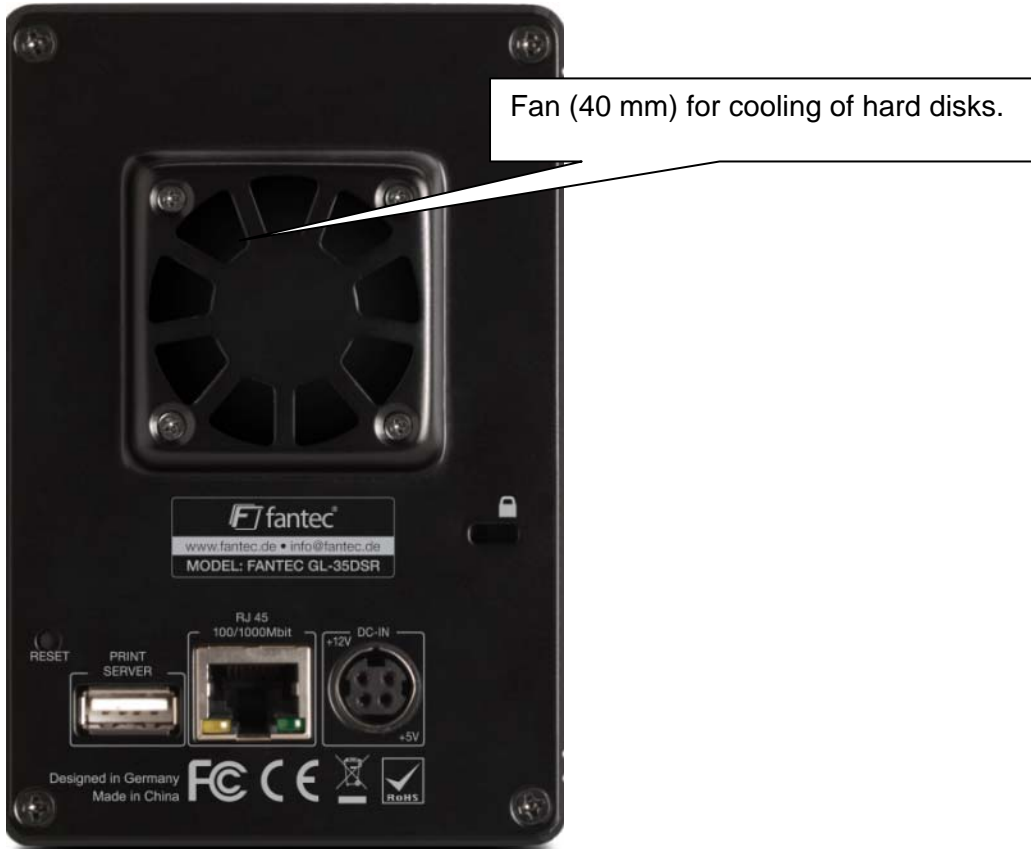
1.4.1 Front







Press to turn on power. Press and hold for 3 seconds to shut down the system. Press and hold for 6 seconds to cut off power and forcefully power off the system (not recommended under normal circumstances).

LED/Icon	Status/Function
	<ul style="list-style-type: none"> Blue = Power ON
Access	<ul style="list-style-type: none"> Flashing blue = Read/Write data access
HDD1/2 ERROR	<ul style="list-style-type: none"> Red = Error or empty drive bay (HDD 1 will light up during start up)
READY	<ul style="list-style-type: none"> Green = NAS system is ready and running in standard mode from HDD
LAN	<ul style="list-style-type: none"> Green = NAS is connected to the network
BACKUP	Press this button for one second to copy all the files from the attached USB drive to the public folder on the network drive.
	USB 2.0 host port for USB drives (FAT32 read/write)

1.4.2 Rear



Button/Icon	Status/Function
	Slot for security lock
RESET	<ul style="list-style-type: none"> When the power is turned off, press and hold this button, turn on the power and let go of the button when you see the LED at HDD 1 light up red (~ 2 seconds) in order to enter the flash mode.
	USB 1.1 host port for USB printers
	<ul style="list-style-type: none"> Yellow = Indicates data access (read/write) Green = Indicates LINK status of network connection
	Power receptacle

1.5 Quick Installation Guide

Following is a quick installation guide to get you up and running in a matter of minutes. For further details on each of the settings, please refer to the subsequent chapters.

1. Install minimum one hard drive.
2. Connect the Ethernet cable from your network router/switch to the GL-35DSR.
3. When everything is connected:
 - a) Press and hold the Reset button.
 - b) Turn the GL-35DSR on.
 - c) Release the Reset button after about 2 seconds and give it about 1-2 minutes to start.
4. Start the “Discover Tool” to locate the network drive and initialize the NAS system.
5. Login via web browser to modify the settings of your network drive and set up your users.
6. You are now ready to start sharing files.

Note

Without installing hard drives and initializing the NAS system first, the device cannot be accessed via web browser.

1.5.1 Power ON / OFF Procedure

Connect the power supply to your device first. Then connect the power supply to the wall socket. To turn on the GL-35DSR LAN, press the power switch to start up the system. It will take about one to two minutes for the device to go online. The green READY LED will indicate when the system is ready.

To safely turn off the GL-35DSR LAN, press and hold the power switch for 3 seconds. The system will shut down all services and about 20 seconds later, it will power off.

If for some reasons the system is unresponsive, press and hold the power switch for 6 seconds to forcefully shut down the system and cut off the power.

Note

If the device is not in use for a longer period of time, we recommend turning off the power and removing the power supply from the wall socket.

1.6 About Data Backup

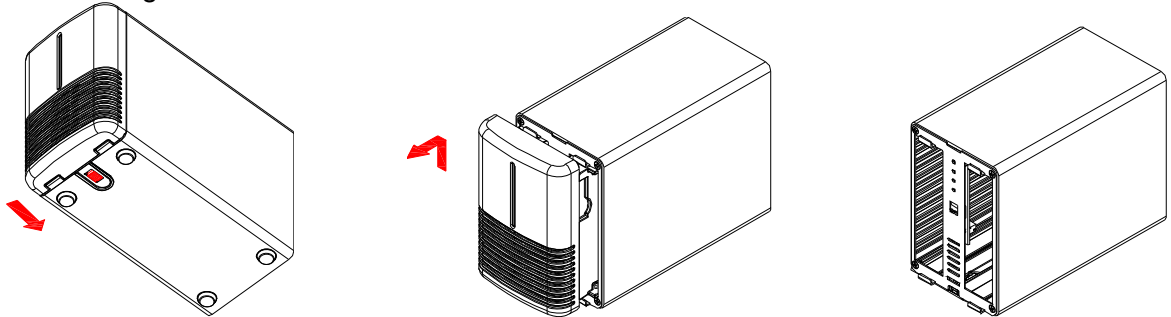
To protect your files and prevent the loss of your data, it's strongly recommend to keep two copies of your data. One copy on your GL-35DSR and a second copy on your internal PC drive or another storage media such as a CD, DVD, Tape or an additional external drive.

Any loss or corruption of data while using the GL-35DSR is the sole responsibility of the user, and under no circumstances will the manufacturer be held liable for compensation or the recovery of this data.

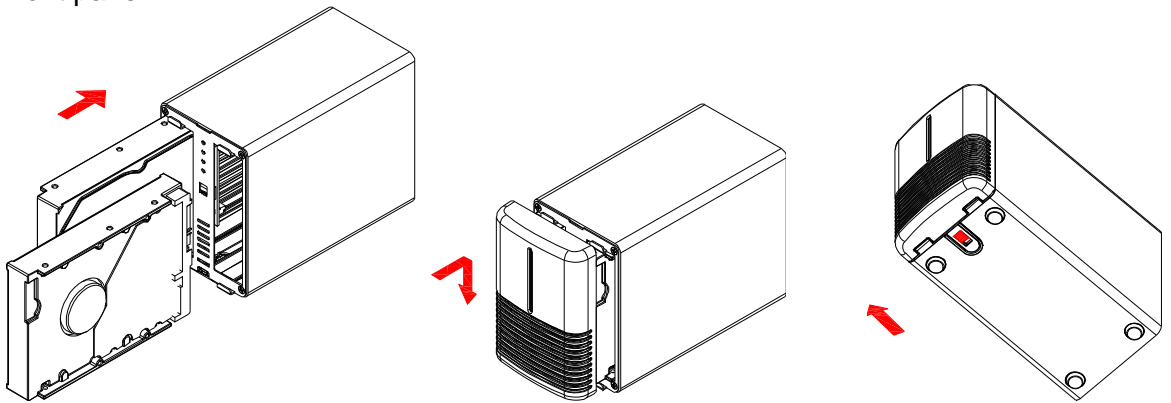
1.7 Before Use

1.7.1 Hard Drive Assembly

1. Unlock the switch at the bottom of the case and lift the front panel upward and away from the housing to remove it.



2. Install the hard drives as illustrated below with the top of the drives, where the label is located, facing each other. Push the drives lightly into the SATA interface and then lock the front panel.



Note

Be careful not to damage any components, and do not force the drives into the SATA interface too hard. If they do not easily slide into it and fit, make sure the drives have been installed correctly. The top of the drives, where the label is located, should face each other.

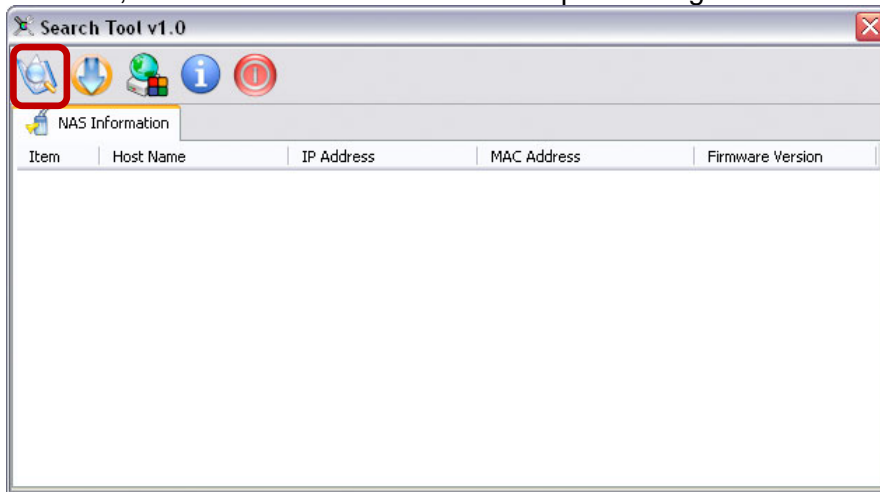
Important

It is not possible to start with only one HDD and then adding a second HDD at a later point. In this way you have to re-initializing the system which will affect a loss of all existing data!

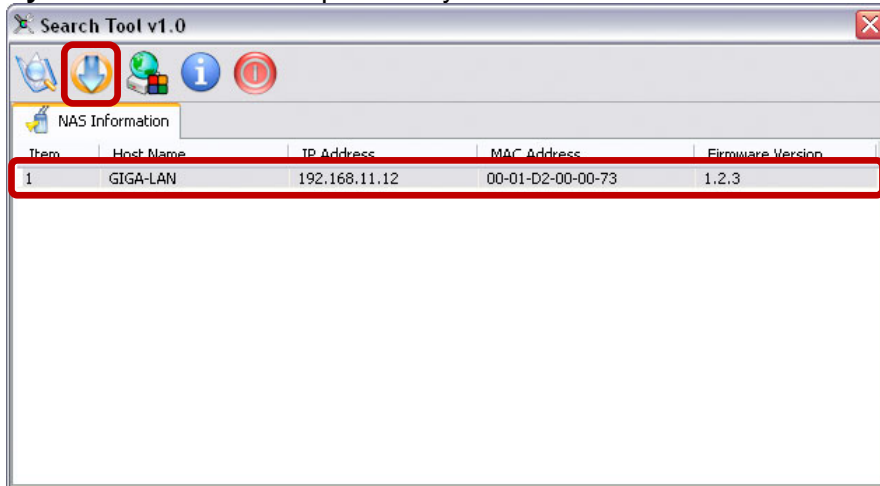
1.7.2 Initializing the NAS System

In order to configure and access the network drive, the NAS system has to be initialized first. To do so, use the Discover Tool program to locate the device, prepare the hard drives and set up the system.

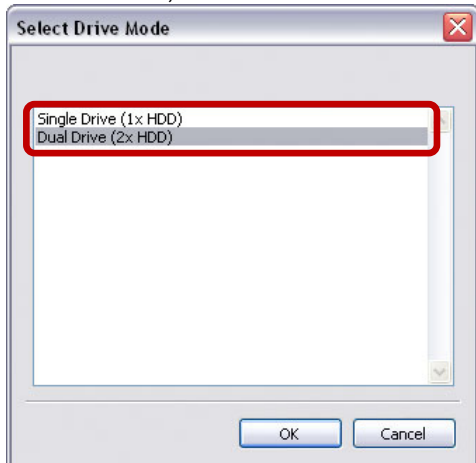
1. Make sure that at least one hard drive has been installed and the network drive is connected to the local network.
2. Press and hold the reset button, turn on the power and let go of the reset button about 2 seconds later.
3. Wait for the green READY LED to start flashing and then start the Discover Tool from a computer that is connected to the same local network.
4. It will automatically search for the network drive but if it doesn't start by itself or didn't find the drive, click **Refresh** to start the search process again.



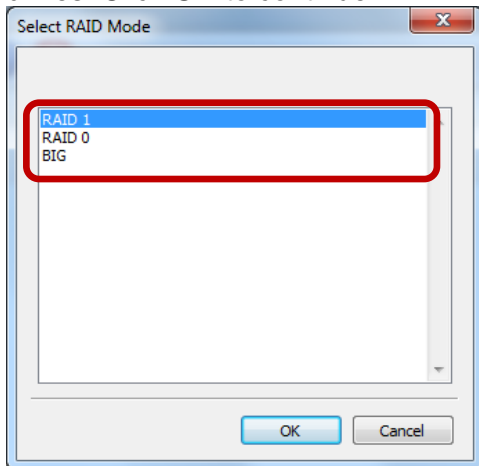
5. Once the device has been located, select it from the list and then click **Initialize NAS System** to start the setup of the system.



6. Select the drive mode from the list. If you have installed only one HDD, select “Single Drive”, or otherwise, for two HDDs select “Dual Drive”. Click **OK** to continue.



If you have installed two hard drives and selected the “Dual Drive” mode, you can now select the RAID mode. Select “RAID 1” to create a mirror copy of all data on the second drive or select “JBOD/BIG” to create one large volume and combine the capacity of both drives. Click **OK** to continue.



RAID 1

Two drives show up as one volume but only 50% of the total capacity. RAID 1 creates an exact copy (or mirror) of a set of data on the second drive. This is useful when reliability and backup take precedence over storage capacity. Should one hard drive fail, it can be replaced and the data rebuilt automatically.

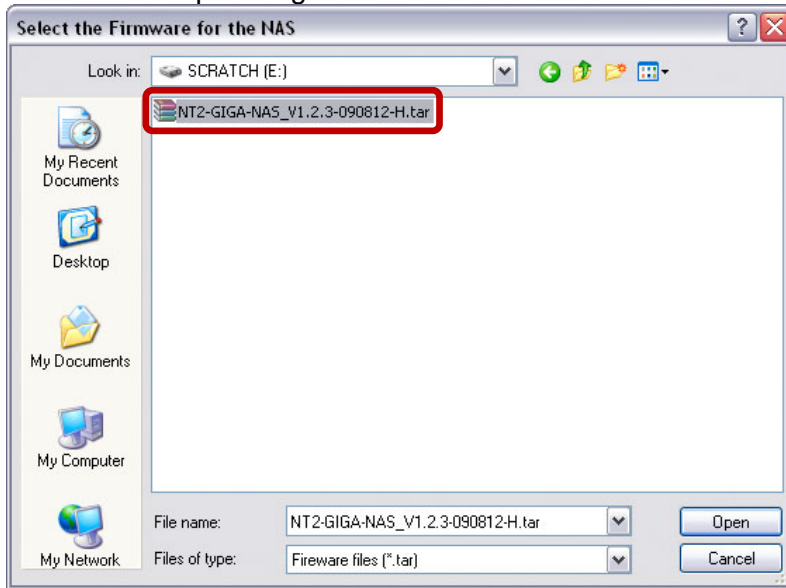
RAID0

The drives show up as one large single volume, combining the capacities of all drives. RAID0 is an array that is written sequentially across the drives. By itself, it does not provide any performance or redundancy benefits. However, if one drive becomes damaged, the whole array can become corrupted.

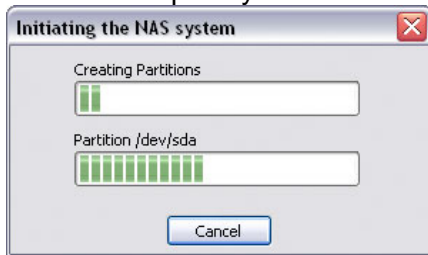
BIG

The drives show up as one large single volume, combining the capacities of all drives. By itself, it does not provide any performance or redundancy benefits. It is ideal for drives with different capacities, making use of the maximum storage capacity. However, if one drive becomes damaged, the whole array can become corrupted.

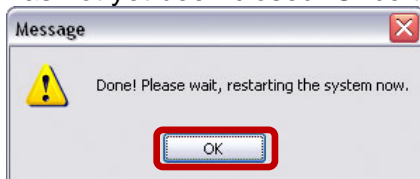
7. Select the firmware you like to install. This should be a “*.tar.” file and has to be uploaded without decompressing the file first.



8. Double-check your settings and press **OK** to continue. If there is a mistake and you would like to change some of the settings, press Cancel to abort and start again from step 3.
9. It will now prepare the hard drives, initialize the system and install the firmware. This process will take several minutes. Make sure not to interrupt it in any way and wait until it is finished completely.



10. Once the process is done, a message will pop up to confirm that it is finished. Click **OK** to close the dialog and wait for the system to restart by itself. It will restart even if the dialog has not yet been closed. Once the NAS is ready, the green READY LED will light up.



Note

Initializing the NAS system is only necessary the very first time, when new hard drives were installed or when the drives have been formatted again. To change the settings of the network drive or to upgrade the firmware after initializing the system, login to your network drive via web browser and go to the “Preference” menu.

To initialize the NAS system again if the firmware has already been installed, first enter the flash mode, before trying to initialize it. To enter the flash mode, press and hold the reset button when the device is turned off. Turn on the power and release the reset button once the HDD 1 LED lights up red (~ 2 seconds). After the system has started up, the green system LED will be flashing and it will be possible to initialize the system again.

2 NAS Settings and User Interface

2.1 How to login

To configure your GL-35DSR LAN, open your web browser, enter the IP address or device name of your GL-35DSR LAN and then use the web interface for further configuration. To locate the network drive and find out its IP address, we recommend using the Discover Tool program.

Default Login

User name: admin

Password: 123456

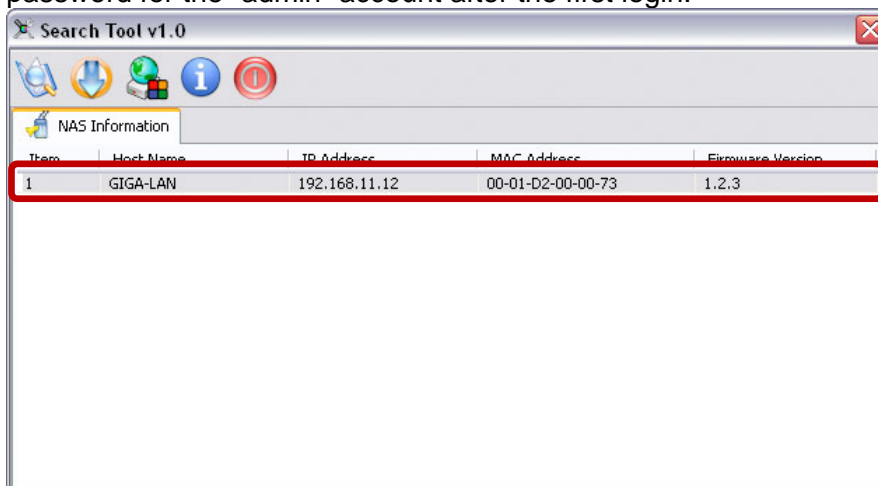
2.1.1 Discover Tool

The Discover Tool program can be used to locate and access the network drive on your local network.

1. Make sure that the network drive has already been initialized, that it is connected to the same local network as your computer and the power is turned on.
2. Wait at least 15 seconds after turning on the network drive and then start the Discover Tool. It will automatically search for the device but if it does not find it, click **Refresh** to start the search again and make sure the program is not being blocked by any firewall.

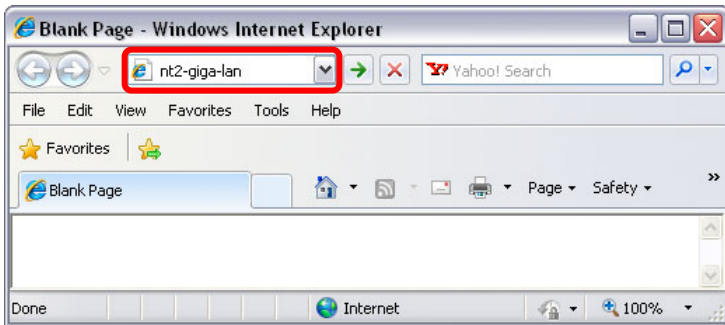


3. Once the device has been located, select it from the list and double-click on it to open the configuration page in your web browser. By default, the user name is “admin” and the password is “123456”. For security reasons, we strongly recommend changing the password for the “admin” account after the first login.



2.1.2 Web Browser & Device Name on a PC

Use the device name, which by default is “//gl-35dsr”, enter that name into the URL field of your web browser and then access the web configuration interface of your GL-35DSR.

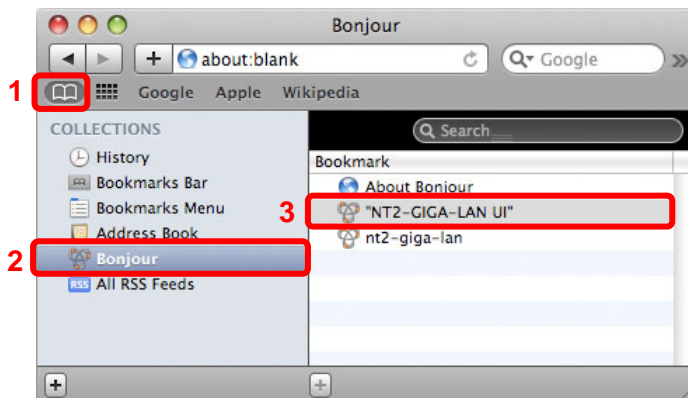


Note

This method of login only works on Windows and not on a Mac!

2.1.3 Safari Web Browser & Bonjour Bookmarks on a Mac

Start your Safari web browser, open the Bookmarks panel and select Bonjour. Locate and select the “gl-35dsr-GIGA-LAN UI” link and double-click on it to open the login page of the network drive, in order to access the web configuration interface of your GL-35DSR.



2.2 User Interface & Settings

2.2.1 Albums

The screenshot displays the Fantec web interface for managing albums. The top navigation bar includes 'Albums', 'Library', 'Preference', 'Applications', 'Registration', 'About', and 'Logout'. Below the navigation bar, there are three tabs: 'View', 'Filter', and 'Download'. The main content area shows a grid of album thumbnails, each with a preview image and a filename. Callouts provide the following instructions:

- Click **Download** to save the selected files on your computer**
- Filter files and display them according to media type**
- Option to change the **View** how the media files are displayed**
- List of available **Albums****
- Double-click any media file to open it in the browser**

The media files that are stored in an album can be viewed and displayed directly in the web browser. Select your preferred View to browse your media files or download them to your computer.

Note

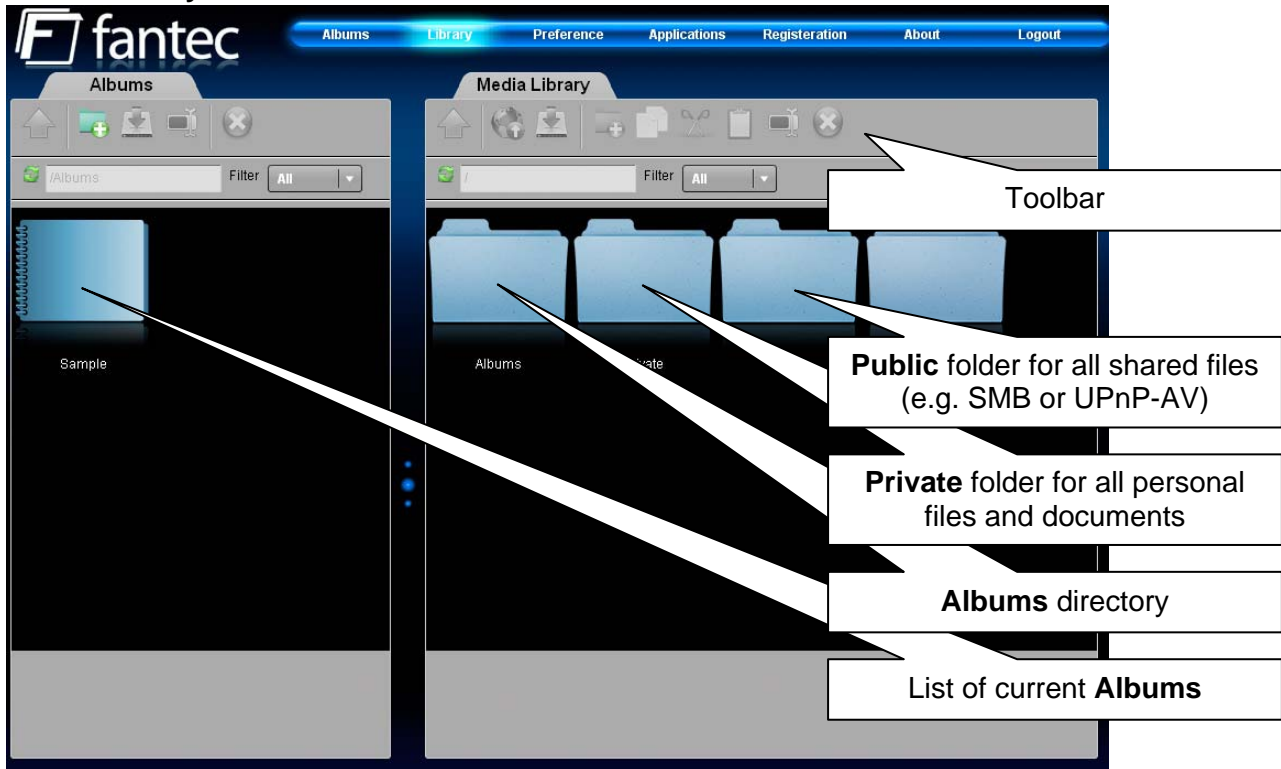
The use of Subfolders is currently not supported.
The more content is stored in one Album, the more time is needed to load the preview.

The albums are shared with all users by default, enabling access to all users who have an account on this system, making it an easy way to quickly share your media files among your family and friends.

Note

To use the Cooliris View at your PC, a browser plug-in has to be installed first. Please see www.cooliris.com for more details and to download the plug-in.

2.2.2 Library



The Media Library can be used to manage your media files on the NAS. Files can be uploaded, downloaded, sorted, renamed and deleted via web browser. To select multiple files, Shift-Click or Ctrl-Click on the files and then drag and drop them in the new location. By touching the pictures with your mouse over any of the icons in the toolbar you can see a description of each function.

Albums

Files that are stored in an album can be viewed and downloaded directly in the web browser. The albums are shared with all users by default. Enabling access to all users who have an account on this system is an easy way to share your media.

Use the Albums window on the left hand side to create a new album, browse for your media files in the Media Library and then simply drag and drop the files into your new album. When removing an album, it will only delete the link to your media files but not actually remove them from the drive.

Private

All files stored inside the Private directory will only be accessible by the current user. Use this to store your personal files and documents. If you ever need to share some files with other users, simply drag and drop them to an album or copy them to the Public folder instead.

Public

The files stored in the Public directory can be accessed by all users. The media files can be accessed from a DLNA or UPnP-AV player and documents can be shared via SMB (Samba) or FTP connection. Any user mounting the device as a network drive will be able to view and modify the files in this folder.

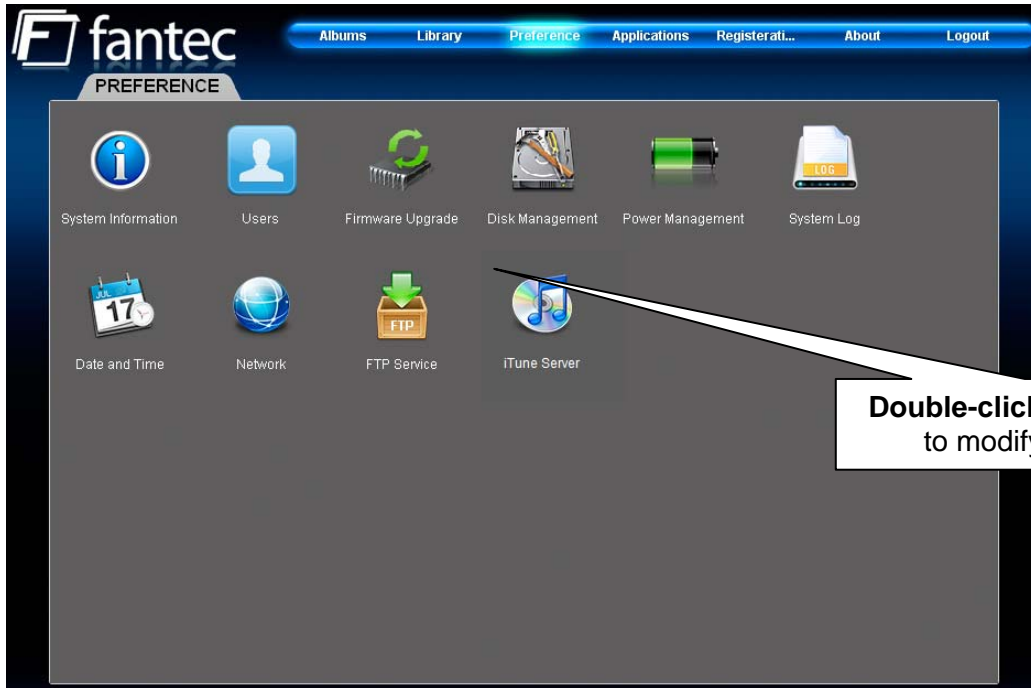
Note

To upload single or multiple files by dragging them from your computer and dropping them in the Media Library, install Gears from Google. See <http://gears.google.com> for more details.

Important

For a large number of files or folders to be copied, it's recommended to copy these files via SMB. This way is a lot faster, than the use of GUI copy mode with Google Gears!
 Please enter the IP address into the browser bar of you Internet Explorer (e.g. \\192.168.11.10) or enter the name of the device (e.g. \\gl-35dsr).
 For more information please see chapter 3.1.1

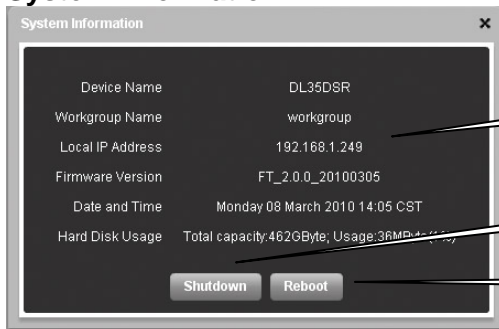
2.2.3 Preference



Note

Only the system administrator (admin) is able to modify any of these settings. All other Users will only be able to view the system information.

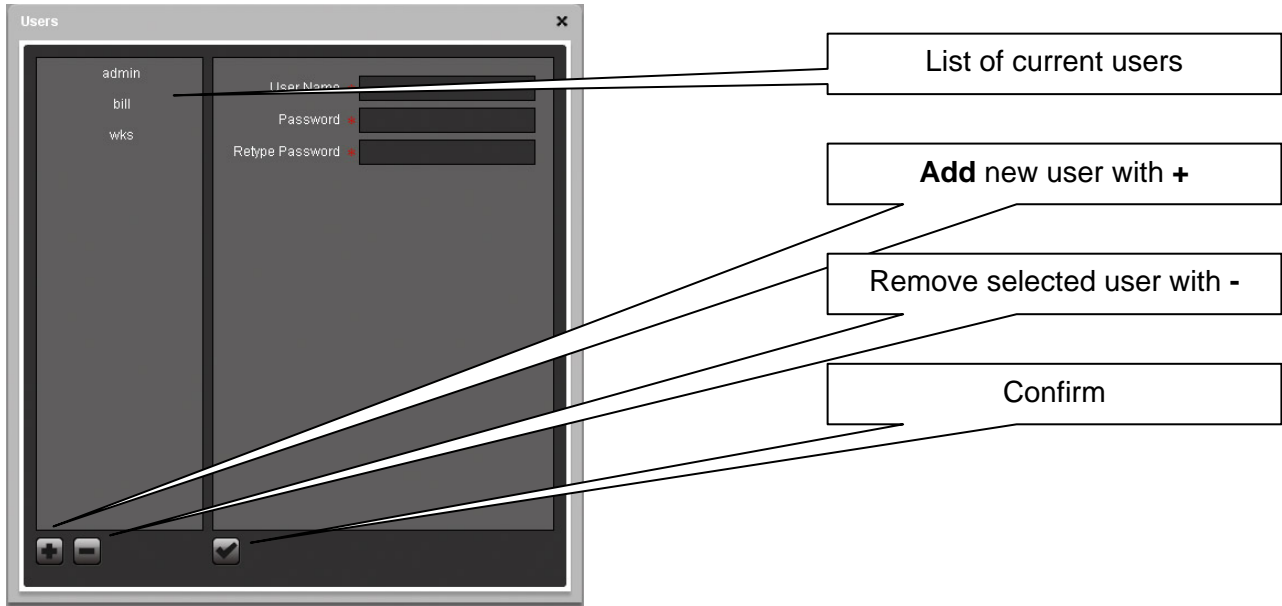
System Information



- Displays important information about the NAS system
- Click to shutdown the system
- Click to reboot the system

This menu displays important information about the NAS, such as IP address, firmware version, date & time as well as the disk usage.
 To shut down the system click **Shutdown**, to restart the system click **Reboot**.

Users



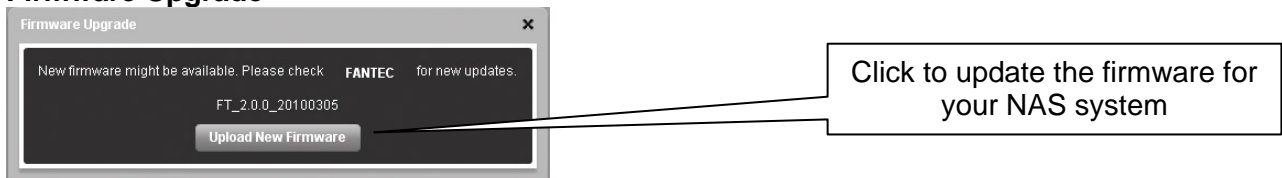
To add a new user, click +, fill out the user name (no special characters), enter the password twice and then click ✓. To remove an existing user, select the name from the list, click – and then confirm the removal.

The admin account for the system administrator is created by default and cannot be deleted. However, for security reasons, we recommend changing the default password as soon as possible.

Note

Only the system administrator (admin) is able to modify the NAS settings.

Firmware Upgrade

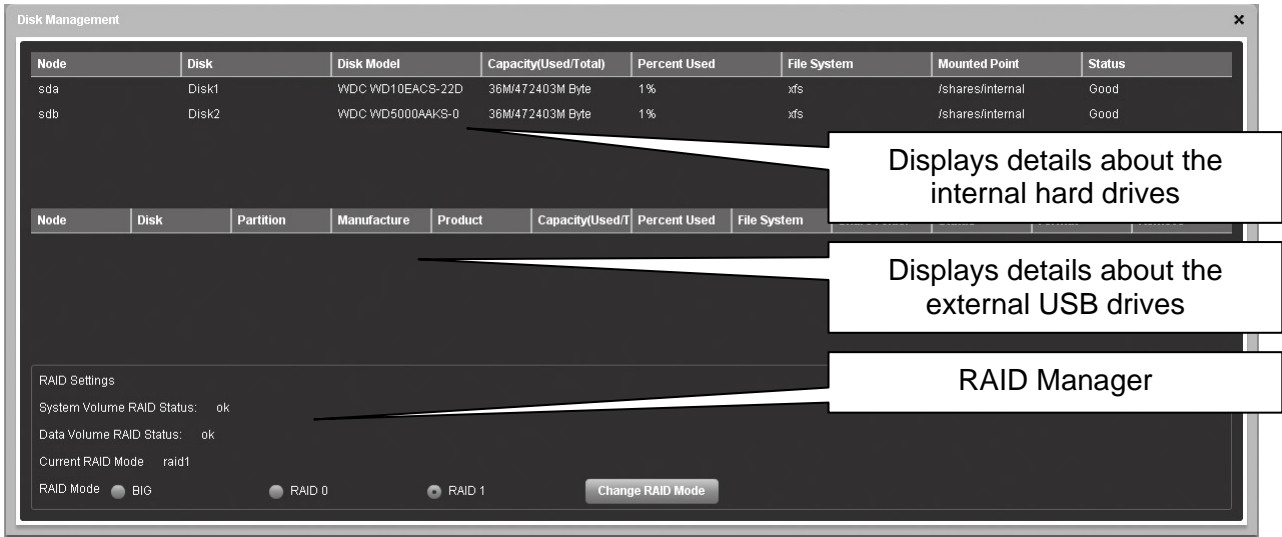


1. Click **Upload New Firmware**.
2. Select the firmware from your computer and upload it to the GL-35DSR.

Important

Never turn off your unit during the firmware update procedure. This may damage your device! If the upgrade fails (e.g. power supply failure during firmware update), you may not be able to operate your device anymore

Disk Management



RAID Settings

For data security select RAID 1 (mirror copy) mode, for performance select RAID 0 mode and to combine different HDDs select BIG mode.

If one HDD is faulty (RAID 1 mode only), please turn off the NAS, replace the defective hard drive and restart the system. It will automatically rebuild the RAID1 array. Rebuilding the RAID1 array will take a while. The time of rebuilding depends on the capacity of your hard drives.

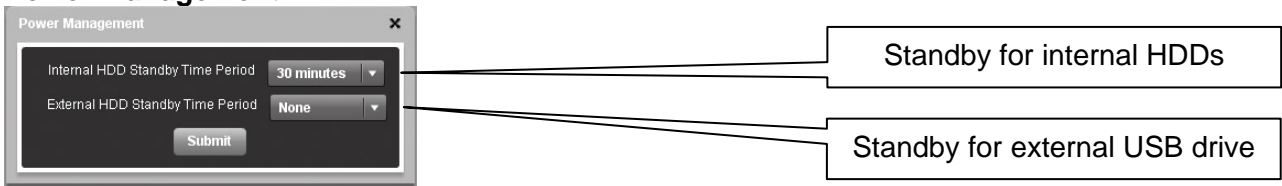
Important

Changing the RAID mode will erase all existing data!!! Make sure you have a backup of your data before you change the RAID mode.

Note

Before disconnecting and shutting down an attached USB drive, it is recommended to use the Disk Management tool and click **Remove Disk** for the corresponding device in order to safely eject it.

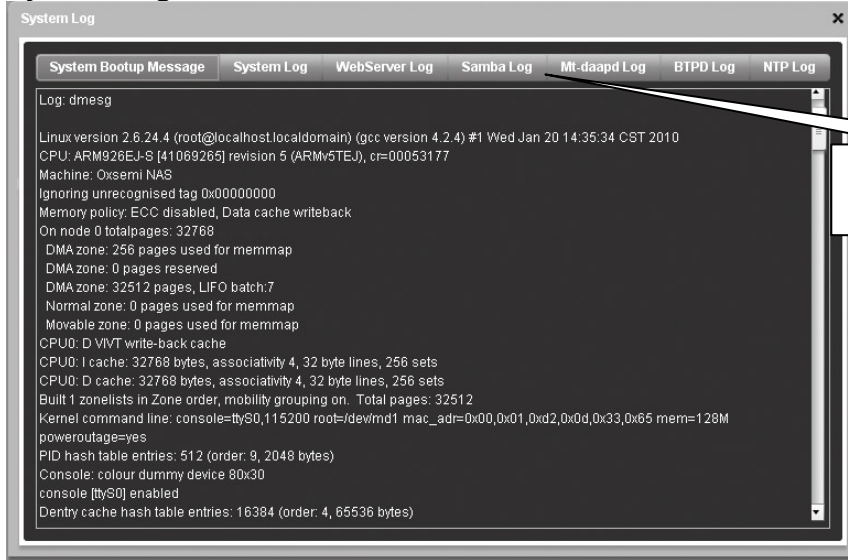
Power Management



HDD Standby

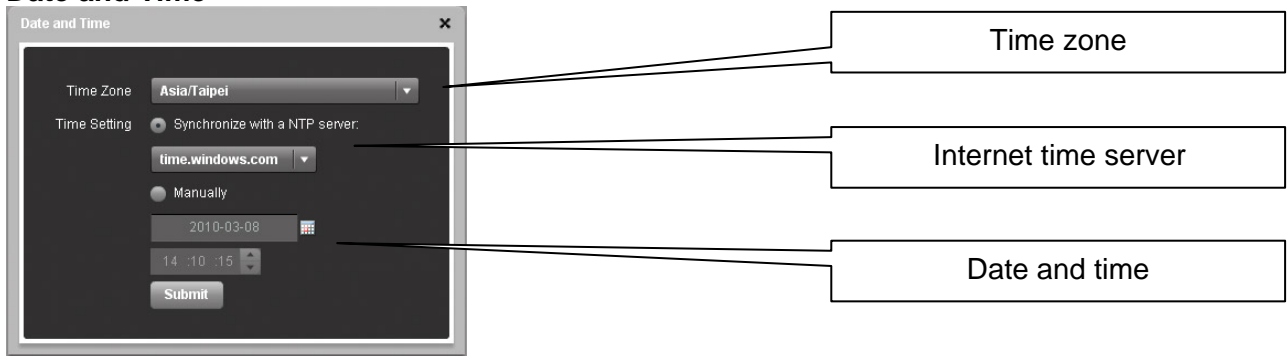
Select a time from the drop down list or select None to disable the HDD standby function. If a time has been set and the drive has been idle long enough, the system will power down the drive to save energy and reduce heat.

System Log



- **System Bootup Message** – Displays the system start up log from boot to system ready.
- **System Log** – Displays the main log of the system.
- **WebServer Log** – Displays the log of the web server.
- **Samba Log** – Displays the SMB log of the Samba server.
- **Mt-daapd Log** – Displays the iTunes log of the music server.
- **BTPD Log** – Displays logs that are related to the BitTorrent application.
- **NTP Log** – Displays the NTP log of the network time server.

Date and Time



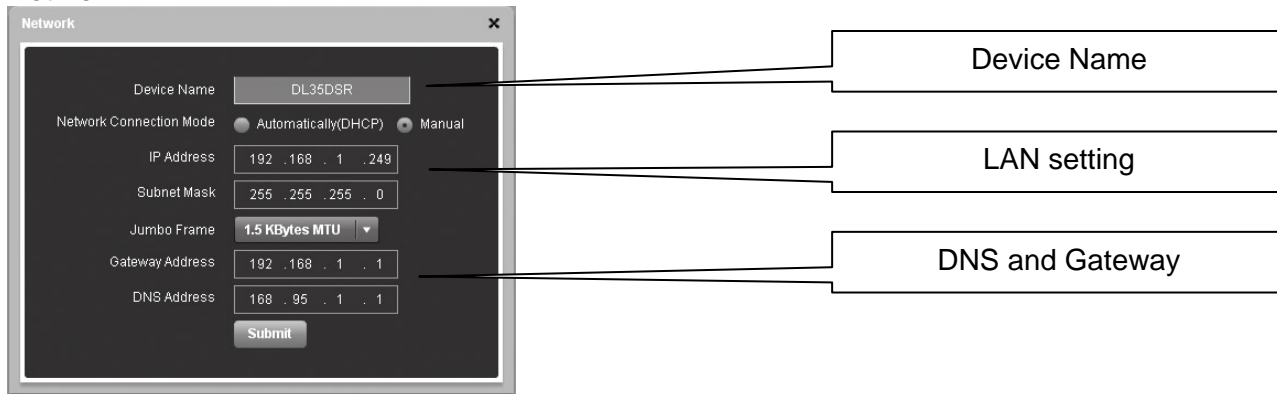
Date and Time

If internet access is available, we recommend selecting the correct time zone from the list, enabling the function “Synchronize with a NTP server” and clicking **Submit** to update and synchronize the time. The time will also be synchronized again after every restart of the system.

Note

To use the time server, you need to enter a valid NTP server. If none of the pre-selected time servers are working, turn off the NTP server and set the time manually. The GL-35DSR comes equipped with a battery and a real-time clock, so even if the device is powered off, it will retain the correct time.

Network



Device Name

This name is used to identify your device on the network. If you prefer a different name that is easier to remember, change it and click **Submit** to save the new name. When selecting a new hostname, make sure to use a unique name and not one that has already been used on the local network. By default, the device name is set to GL-35DSR.

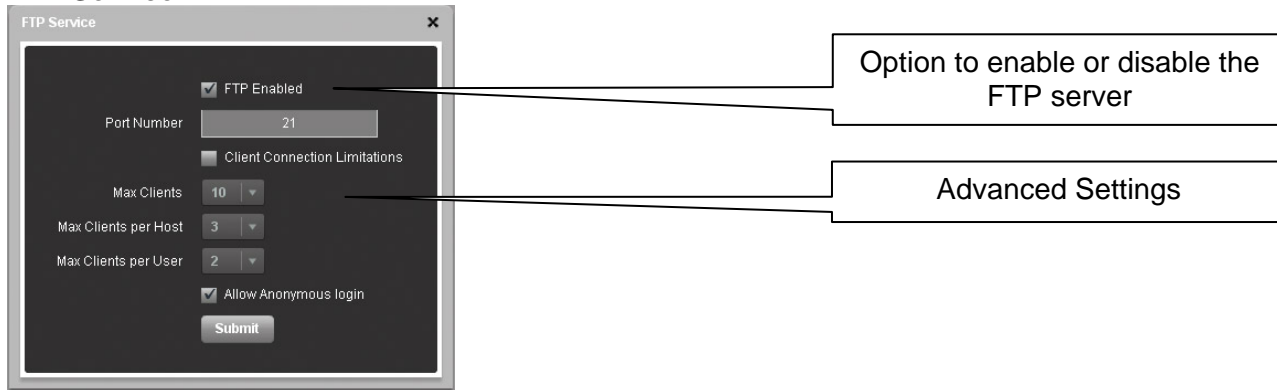
LAN Setting

We recommend using “Automatically DHCP”, in order for the network drive to automatically obtain its IP address from the DHCP server. If required, you can also set it to a static IP address and fill out all information manually. If you need assistance with these settings, please contact your network administrator for help.

Note

After changing any of the settings, click **Submit** to save the new configuration.

FTP Service

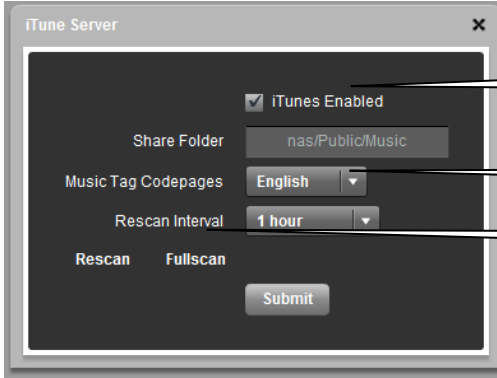


By default, the FTP server will run on port 21 but if this port is not available or blocked, it can be changed to a different port number. To reduce the loading on the system and the bandwidth, FTP clients can be limited according to your own preferences.

Note

For security reasons, it's recommended to disable the **Anonymous** login.

iTunes Server



- Option to enable or disable the iTunes server
- Advanced Settings
- Option to run a scan manually

The iTunes server is enabled by default and will automatically stream all MP3 music that is stored inside the /Public/Music folder with iTunes.

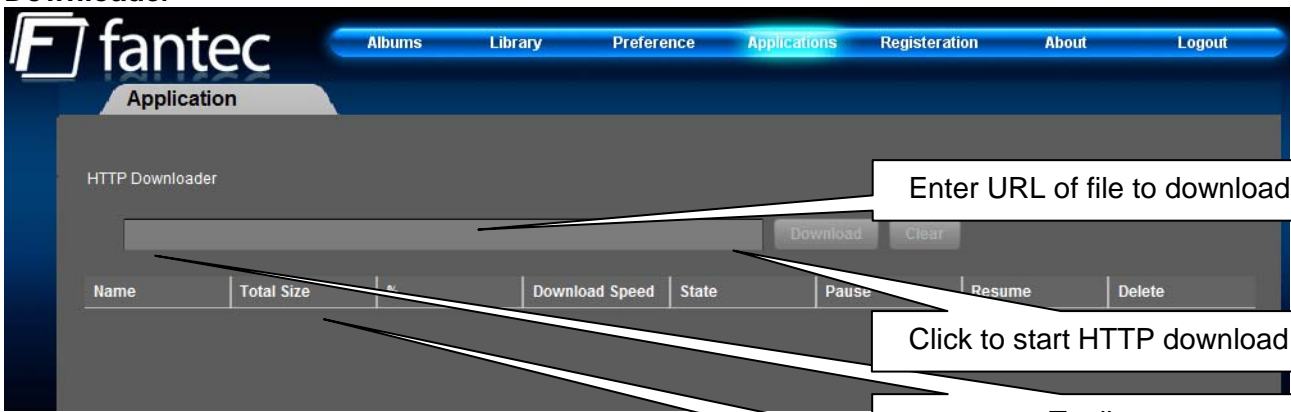
To add more songs, simply copy the new MP3 music files into the /Public/Music folder and wait for the rescan interval or login via web browser and click Rescan to scan the folder immediately.

Note

The directory for the shared music files is set to /Public/Music and cannot be changed. Songs that are not stored inside that directory will therefore not show up on iTunes.

2.2.4 Applications

Downloader

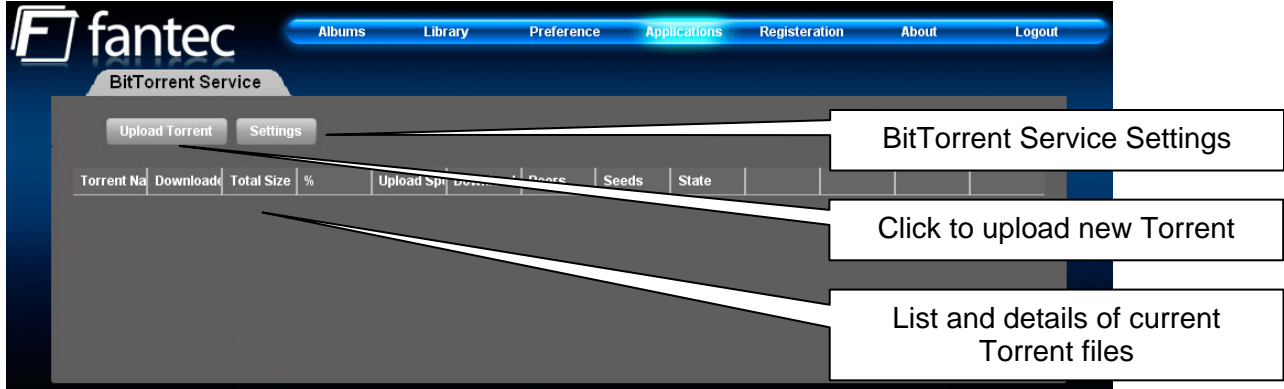


- Enter URL of file to download
- Click to start HTTP download
- Toolbar
- List and details of current files

To start downloading files, copy the URL (HTTP or FTP) to the file you like to get and paste it into the address field of the Downloader. Click **Download** to start the process.

The Downloader can download 20 files at a time with an additional 30 files in the queue. Once the files have been added to the queue, it can download the files by itself and the computer can be turned off.

BitTorrent Service



To start downloading files, download a torrent file from the internet and then upload it to the network drive. Once the torrent file has been added, you can start downloading. The downloaded files will be stored in the “BT” folder inside the Public directory.

The BitTorrent™ client can download 4 files at a time with a maximum of 40 files in the queue. The download speed may not be as fast as a BitTorrent™ client on the computer but once the Torrent has been added to the queue, it can download the files by itself and the computer can be turned off.

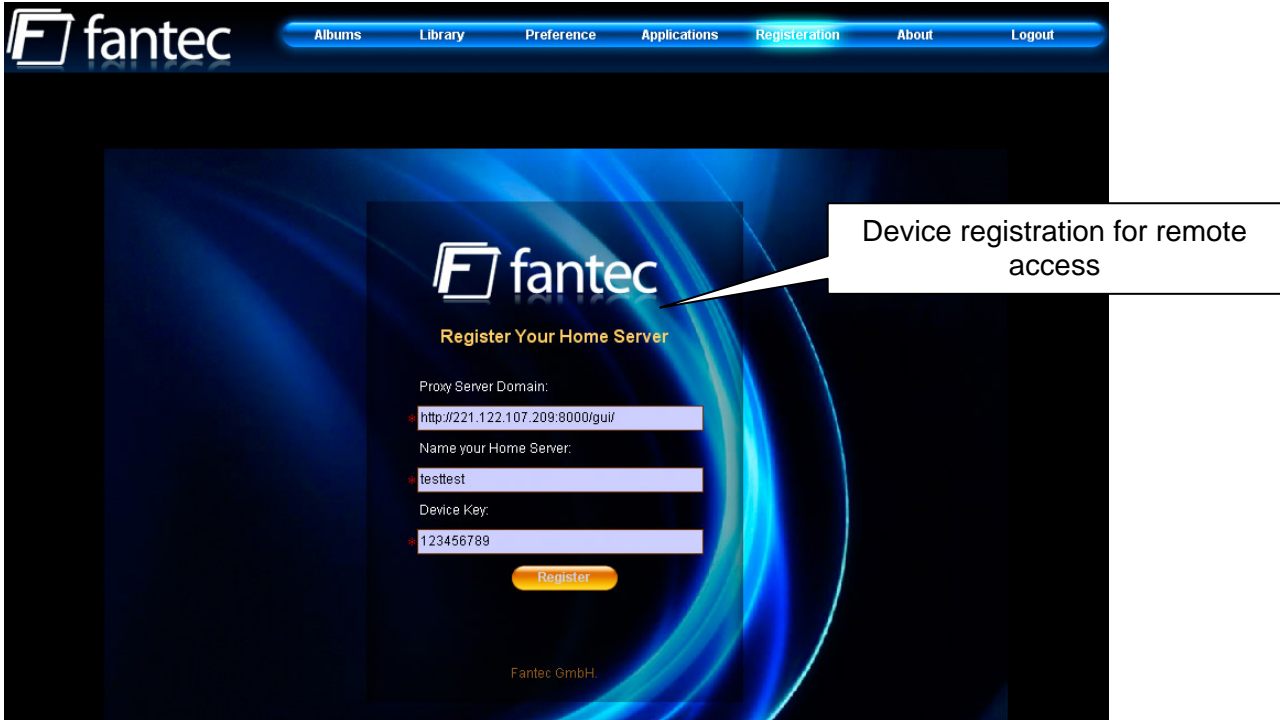
Note

Make sure the port for the BitTorrent™ client is not blocked by your router or its firewall. If necessary, set up port forwarding, so that the traffic for that port (e.g. 6881) is forwarded to your network drive.

Important

Sometimes it may happen, that you cannot add your selected Torrent files. In the case, please rename the file and make sure you do not have any special character or space character inside. (e.g. “driver_update_file.torrent” instead of “driver update file.torrent”)

2.2.5 Registration



Note

This function is currently not yet available!

2.2.6 About

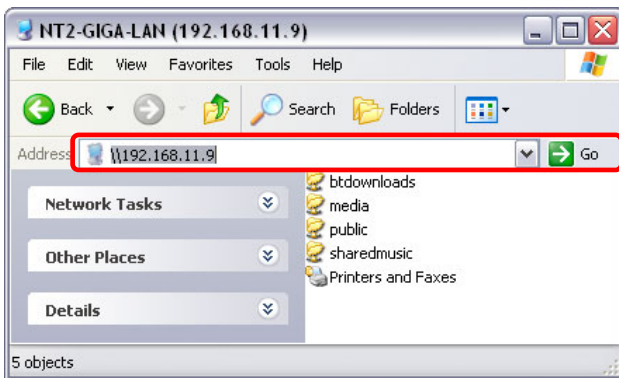


3 Network Storage & Extra Features

3.1 File Access on a PC

3.1.1 Windows Explorer

Use Windows Explorer and type “\” followed by the IP address or the device name gl-35dsr into the address field and press the Enter key on your keyboard. It will then list all available folders on your LAN disk. To create a permanent link to your network drive, see Mapping a Network Drive.



You can copy files to the network drive as if it were a folder on your local drive. Depending on the bandwidth, you can also open and directly play the files. For video playback of high definition content, we recommend transferring the data to your local drive or video player, first.

Note

When you have to access multiple folders with different passwords or have modified the settings without a computer restart, go to Tools (Options) and disconnect the temporary network drive first, before accessing the new folder.

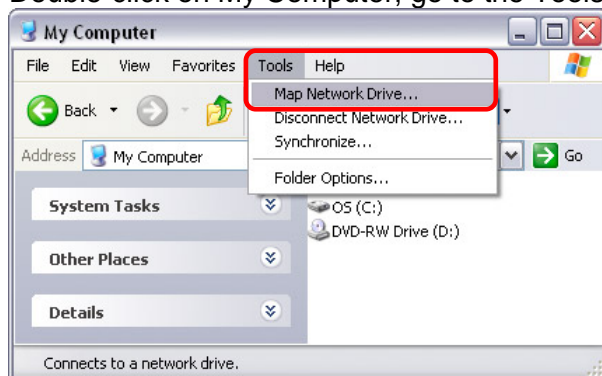
3.1.2 Mapping a Network Drive

Mapping the network drive will allow you to create a permanent drive letter that will be present even after restarting the computer. This permanent drive letter provides convenient access to your network drive and can be used to store files within other applications.

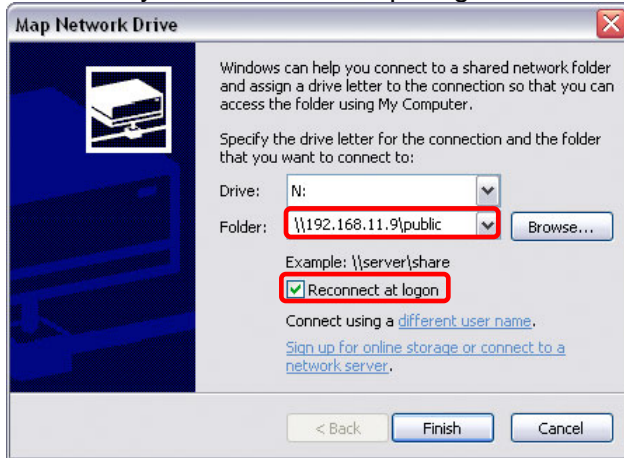
Note

If you have problems when trying to access the shared folders, disconnect all network drives, reboot your computer, restart your network drive (router, switch) and then try again.

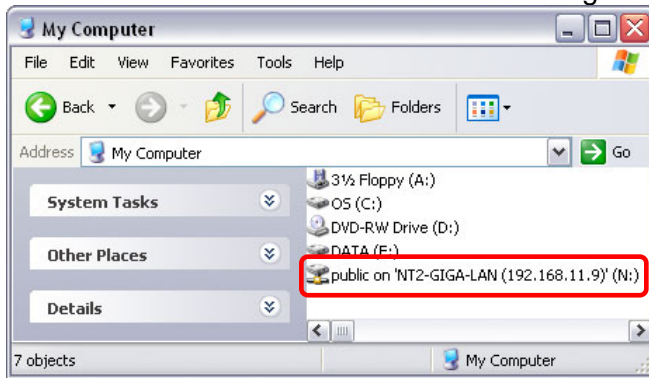
1. Double-click on My Computer, go to the Tools menu and select “Map Network Drive...”.



2. Follow the setup wizard and fill in the path to your network drive. When entering the IP address, also add the folder name of the share (e.g. \\192.168.11.11\public). It is recommended to select the “reconnect at logon” option when you map the network drive, otherwise you will have to map it again after a system restart.



3. Once the drive has been mapped, you are able to find and access it under My Computer. This link will still be there even after restarting the computer.



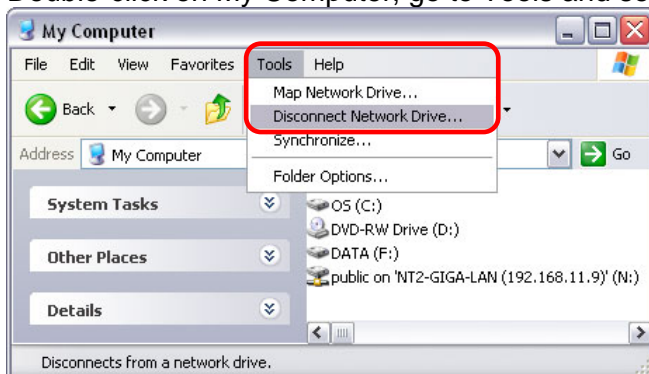
Note

You can also map a network drive by using the Discover Tool program and by clicking on the “Map Network Drive” icon.

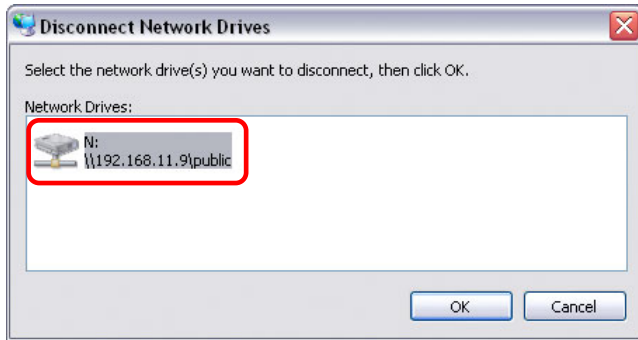
3.1.3 Disconnecting a Network Drive

When you don't need a mapped network drive any more, we recommend disconnecting it. It is also necessary to disconnect a temporary network drive when you try to login with a new user name and password but have not restarted the computer in between the different login.

1. Double-click on My Computer, go to Tools and select “Disconnect Network Drive...”.



2. Select any temporary or mapped network drives that you would like to remove and click OK to disconnect them.



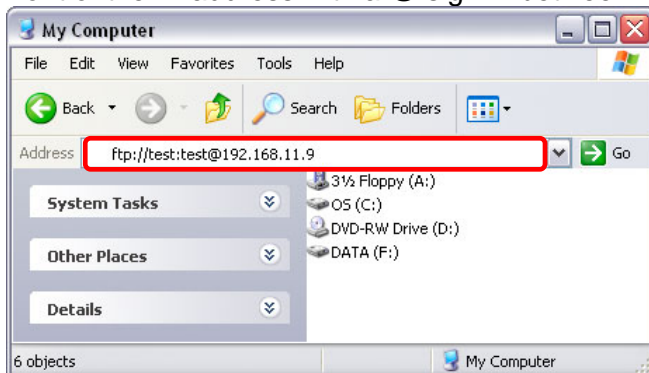
3.1.4 FTP

For FTP transfers, we recommend installing and using a separate FTP application, which can either be a free utility or shareware program.

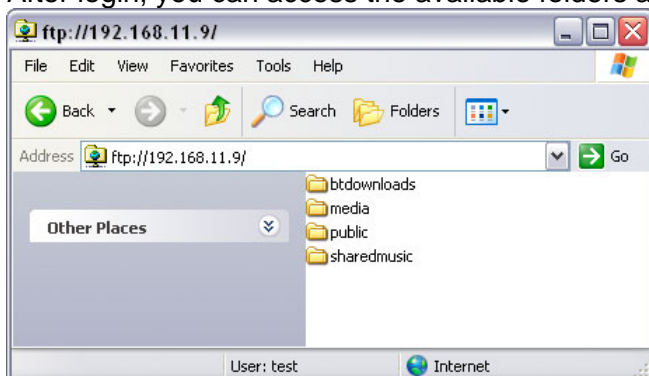
Note

Files cannot be opened directly via FTP, you will always have to transfer them to your computer first, before reading or playing them.

1. Using Windows Explorer, type "ftp://" followed by the IP address of your network drive into the address field. If the account is password protected, add the user name and password in front of the IP address with a @ sign in between like this "ftp://test:test@192.168.11.9".



2. After login, you can access the available folders and transfer your files.

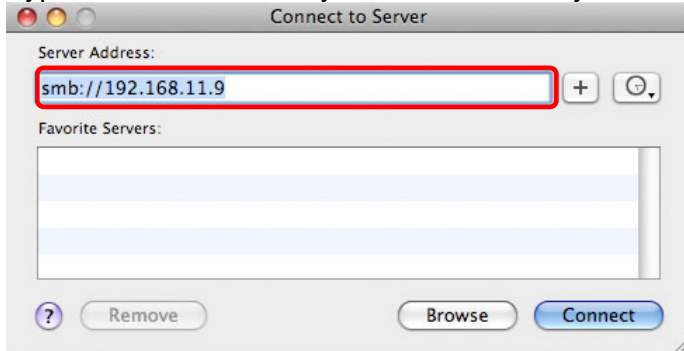


3.2 File Access on a Mac

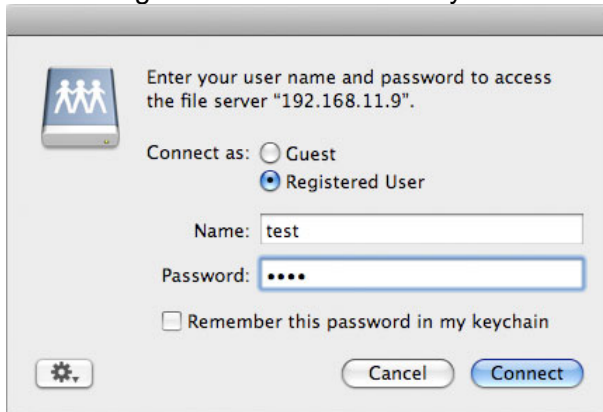
3.2.1 SMB

To mount and access the network drive, use the Connect to Server command.

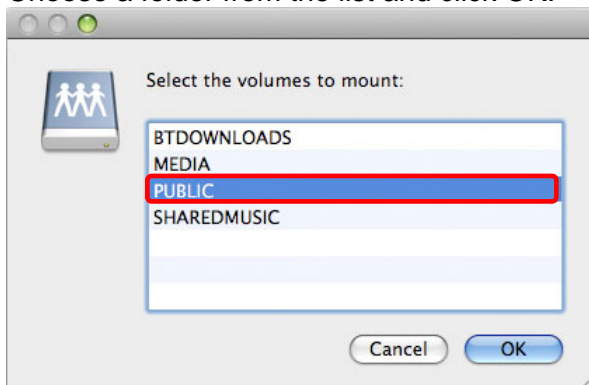
1. Click on “Go” and select “Connect to Server”.
2. Type “smb://” followed by the IP address of your network drive and click on Connect.



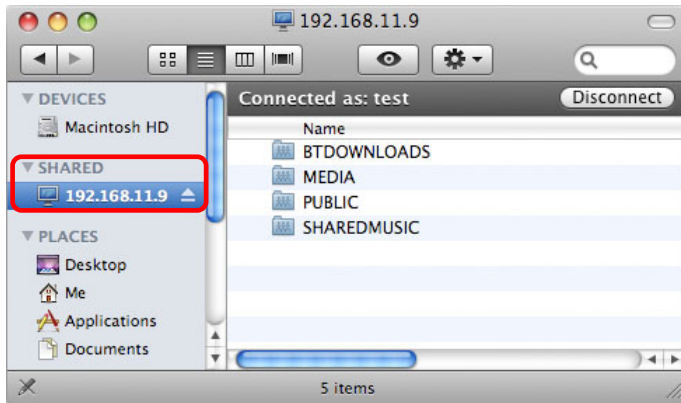
3. Select Registered User and enter your user name and password.



4. Choose a folder from the list and click OK.



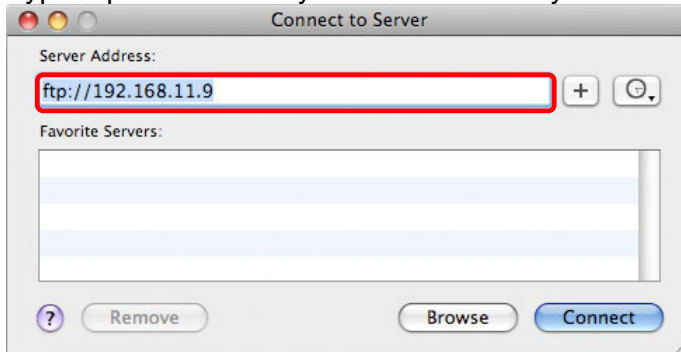
- The mounted drive will be listed in your finder under Shared devices. There you can access the network drive and transfer your files. When no longer needed, click on the eject button to disconnect the drive.



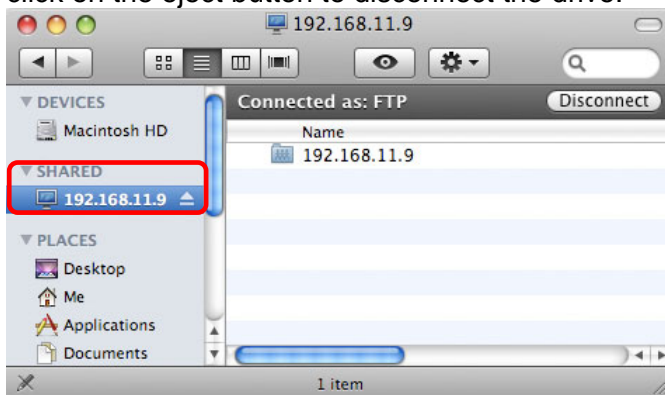
3.2.2 FTP

For FTP transfers, we recommend installing and using a separate FTP application, which can either be a free utility or shareware program. The FTP utility on the Mac will only be able to read the data on the network drive but cannot upload any new data to it.

- Click on “Go” and select “Connect to Server”.
- Type “ftp://” followed by the IP address of your network drive and then click on Connect.



- Enter the correct username and password. The FTP folder will then be listed in your finder under Shared devices and you can download the files. When the FTP is no longer needed, click on the eject button to disconnect the drive.



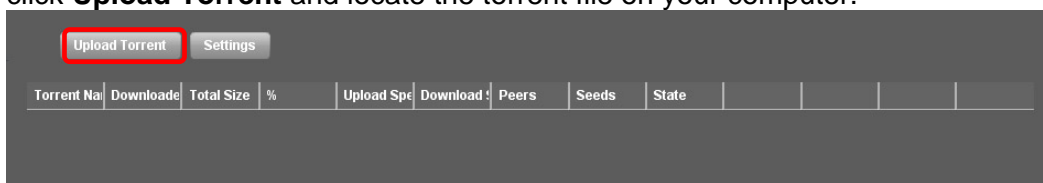
3.3 BitTorrent Download Manager

Used in conjunction with its built-in BitTorrent™ client, the NAS can be used to download files from the Internet and have them saved directly to the hard drive.

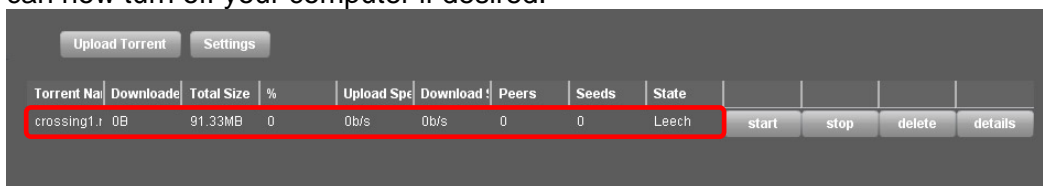
3.3.1 Starting a Download

To start downloading files, download a torrent file from the internet and then upload it to the network drive. Once the torrent file has been added, you can start downloading. The downloaded files will be stored in the “BT” folder inside the Public directory.

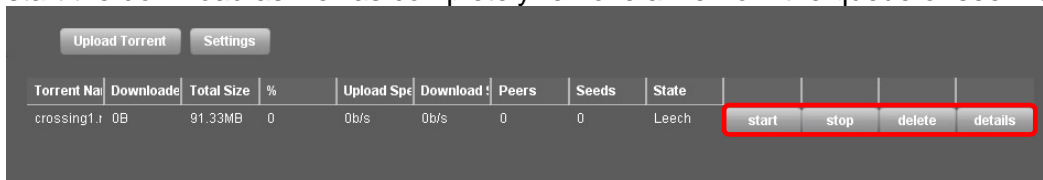
1. Download and store the torrent file(s) on your computer.
2. Login to your network drive and go to the Applications menu. Under BitTorrent Service, click **Upload Torrent** and locate the torrent file on your computer.



3. Click **OK** to confirm and close the confirmation window.
4. The file will be added to the download queue and the download starts automatically. You can now turn off your computer if desired.



5. For further commands, select the file from the list and you will have the option to stop and start the download as well as completely remove a file from the queue or see more details.



6. Once the download process has reached 100% and if the file is not removed from the download queue, it will start seeding (uploading) the file to other users.
7. You can now go to the BT folder and copy your file into your desired folder. If you don't intend to share this file with other BitTorrent users, you can now remove it from the download queue.

Note

Once the Torrent has been added to the queue, the GL-35DSR LAN can download the files by itself and the computer can be turned off.

Important

Sometimes it may happen, that you cannot add your selected Torrent files. In the case, please rename the file and make sure you do not have any special character or space character inside. (e.g. “driver_update_file.torrent” instead of “driver update file.torrent”)

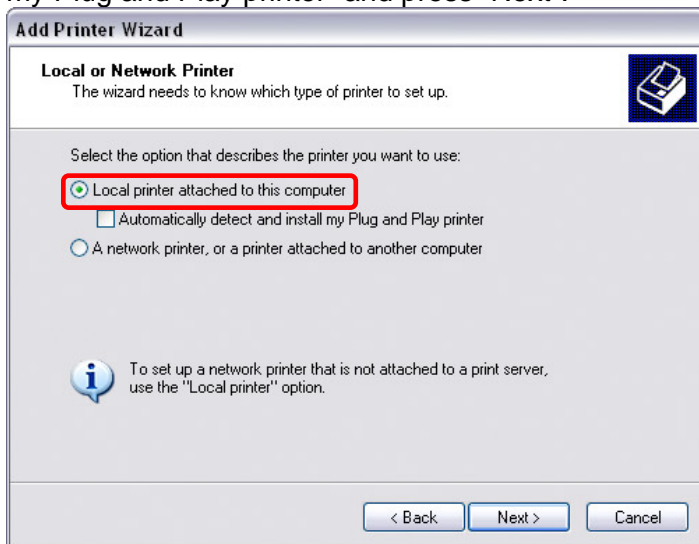
3.4 Printer Server

This network drive is equipped with a printer server. Connect your USB printer to the USB host port on the back of your network drive to share it with other workstations on the same local network.

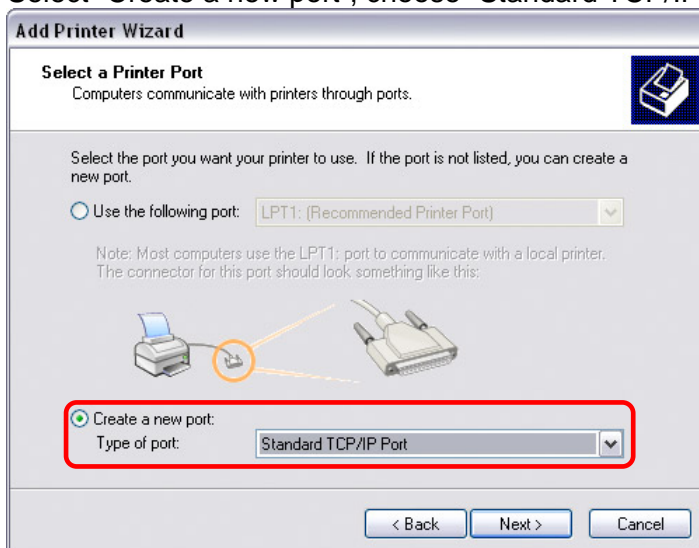
3.4.1 Installation on a PC

Printing via the shared network printer will be slower than when the printer is connected directly to the USB port on the computer. After you press the Print button, please wait for the printer to receive the data.

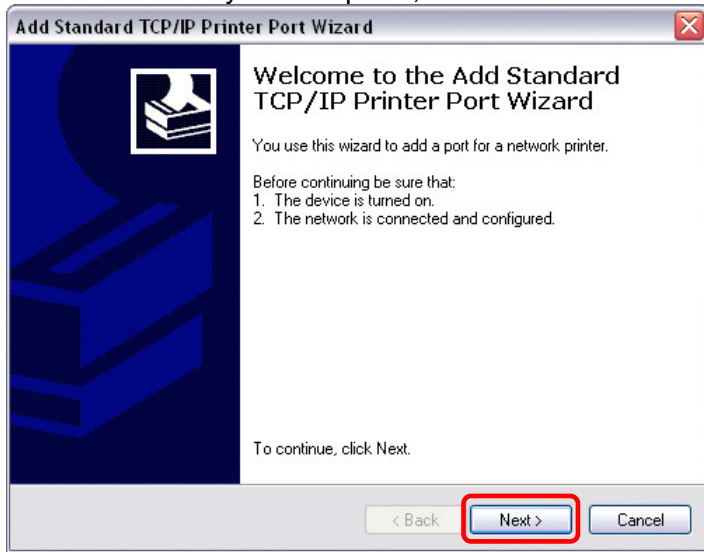
1. Connect your USB printer to the USB host port on the network drive and turn both units on.
2. Login to your network drive and go to the Applications menu to make sure the printer server service has been enabled. We also recommend using a fixed IP address, in order to prevent having to modify the printer setup whenever the IP changes.
3. On your PC, go to Start and select "Printers and Faxes".
4. Go to File, select "Add Printer" to bring up the printer setup wizard and press "Next" to start.
5. Select "Local printer attached to this computer", deselect "Automatically detect and install my Plug and Play printer" and press "Next".



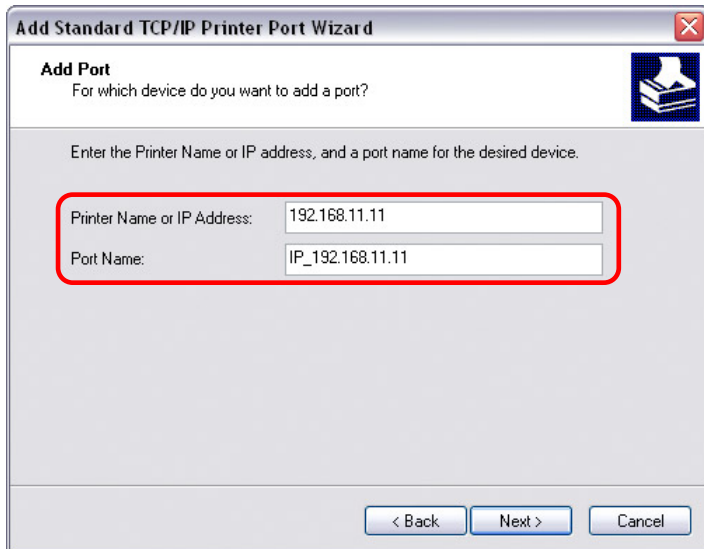
6. Select "Create a new port", choose "Standard TCP/IP Port" from the list and click on "Next".



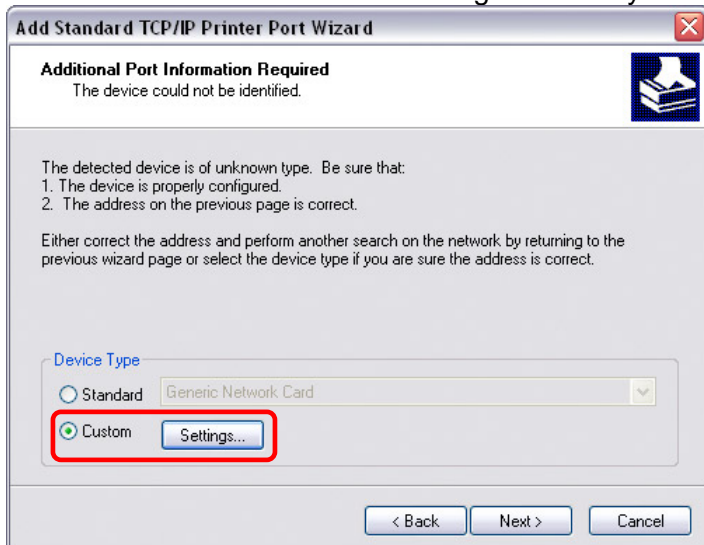
7. Make sure the network drive and printer are both turned on and connected to the same local network as your computer, then click on “Next”.



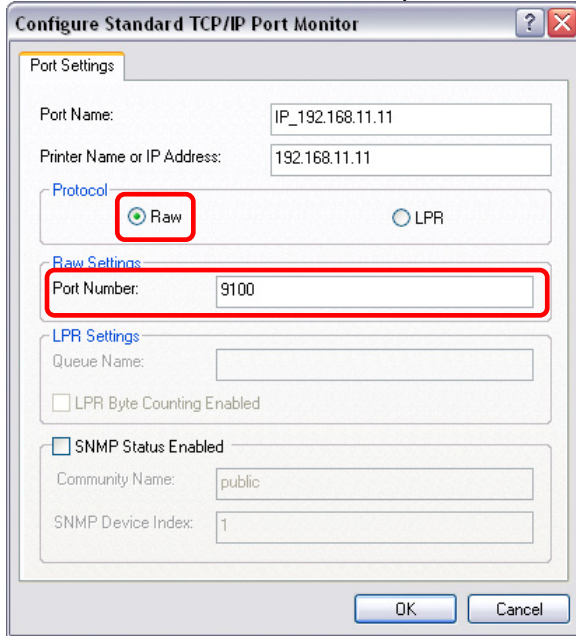
8. Enter the IP address of your network drive (the port name will be filled out automatically) and then click on “Next”.



9. Select “Custom” and click on “Settings” to modify the configuration.

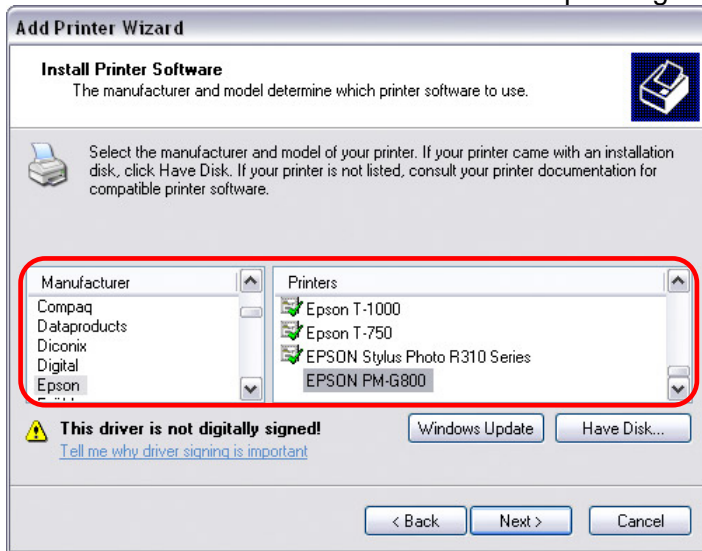


10. Select “RAW”, use the default port number “9100” and then click on OK to confirm it.



11. Click on Finish not complete the TCP/IP Wizard and close the dialog.

12. After clicking on “Next”, a pop-up window will appear asking for a driver. Select your printer model from the list or browse for the corresponding driver on your local drive.



13. In the next few steps, you will be able to give the printer a name, set it as default printer, add a description and print a test page. It is not necessary to share the printer with other network users, because it can be installed on other computers in the same way as here.

14. Once you have completed the wizard set-up your printer should be properly installed and ready to print.

Note

Not all USB printers are supported, e.g. multi function all-in-one printers and GDI/host-based printers, therefore, your printer may not be compatible and printing might fail.

3.4.2 Installation on a Mac

Printing via the shared network printer will be slower than when the printer is connected directly to the USB port on the computer. After you press the Print button, please wait for the printer to receive the data.

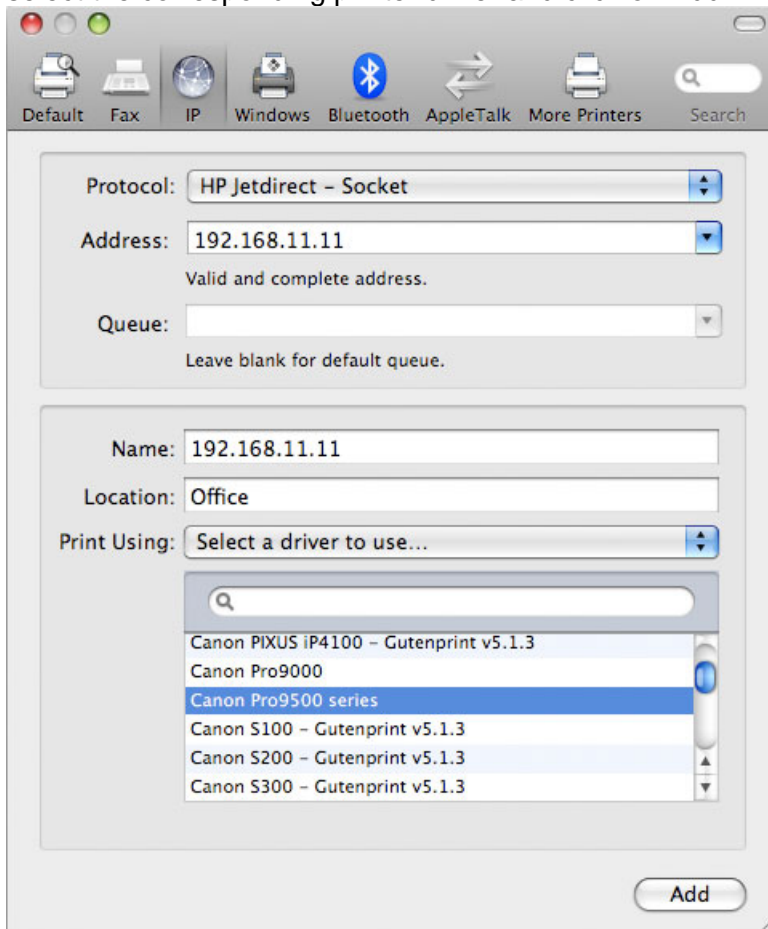
1. Go to System Preferences and click on Print & Fax.



2. Click on the plus symbol to add a new printer.



3. Select the IP tab. For the Protocol, select "HP Jetdirect – Socket" and for the Address enter the IP address of your network drive. The Name and Location are used to easily identify the printer and do not have to be the same as the ones used in this example. For the last step, select the corresponding printer driver and click on Add.



4. Done! Your printer has been set up and you are now ready to print.

Note

Not all USB printers are supported, e.g. multi function all-in-one printers and GDI/host-based printers, therefore, your printer may not be compatible and printing might fail.

3.5 Media Server

The UPnP media server can be used to share your photos, music files and videos that are stored on the network drive in the “Public” folder with a Xbox 360, a PlayStation 3 or any other DLNA compliant UPnP-AV client that is connected to the same local network. Before you start, make sure both devices are connected to the same network and both are turned on.

The UPnP-AV media server supports streaming of the following file formats:

- Pictures: JPG, PNG, BMP
- Music: MP3, WMA, WAV
- Video: MKV, AVI, MPEG, MPG, WMV, DAT, DivX, VOB, MOV, TS, MTS, M2TS, FLV

Note

Playback support for the various file formats also depends on the UPnP-AV client (e.g. PS3 or Xbox 360). For more details, please refer to the documentation of your game console or digital media adapter (DMA).

3.5.1 Xbox 360

1. On your NAS, make sure that the media files you would like to share are stored in the Public folder on the network drive.
2. On your Xbox 360, go to My Xbox and select your preferred media library (e.g. Videos, Music or Pictures), depending on what types of files you would like to play.



3. For the source, select your network drive. By default, the GL-35DSR network drive will show up as Oxford_serv.



- Once inside the Public folder, you can now access your pictures, music or videos, depending on the media library you have selected on your game console.



- Select and play the files you would like view or listen to and enjoy!

3.5.2 PlayStation 3

- On your NAS, make sure that the media files you would like to share are stored in the Public folder on the network drive.
- On your PS3™, open the Settings menu, go to Network Settings, select Media Server Connection and Enable it. This will allow the PS3 to automatically detect the media server on the network drive.



- When you turn on the PS3™, media servers on the same local network are automatically detected and a shortcut will be displayed under Photo, Music and Video.
- Select the network drive to access the Public folder with its shared files and playback your photos, music or videos.

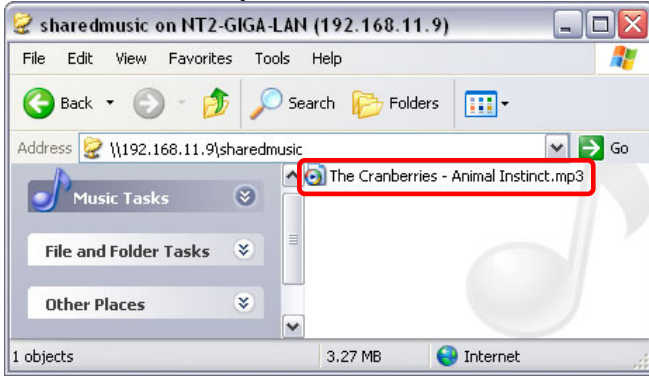
Note

For uninterrupted playback, we strongly suggest using a wired network connection for your game console and not the wireless setup.

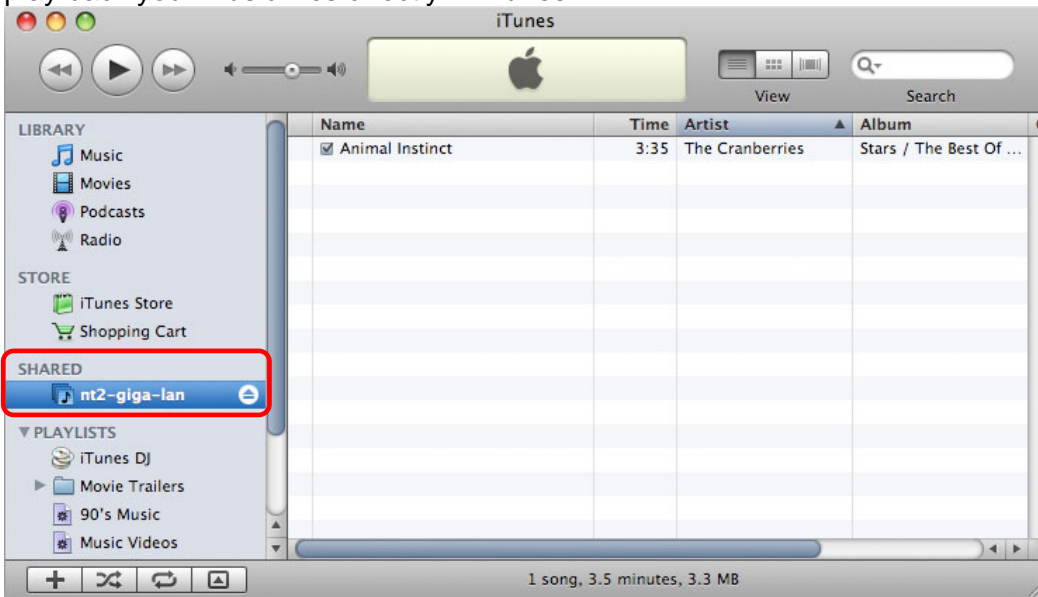
3.6 iTunes Server

When MP3 music files are stored in the “/Public/Music” folder, the files will automatically appear on iTunes and music can be played directly from the network drive.

1. Store the MP3 music files that you would like to access from iTunes on the network drive in the Public directory inside the “Music” folder.

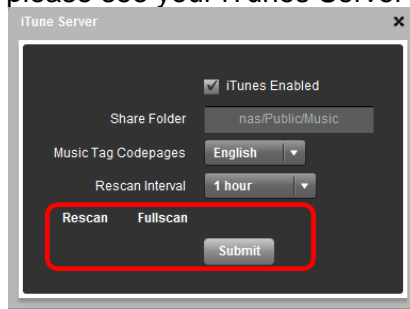


2. If you have only just added your music files, wait for about 1 minute until the music files have been added to the database of the NAS system.
3. Start iTunes, go to shared devices and select your network drive from the list. You can now play back your music files directly in iTunes.



Note

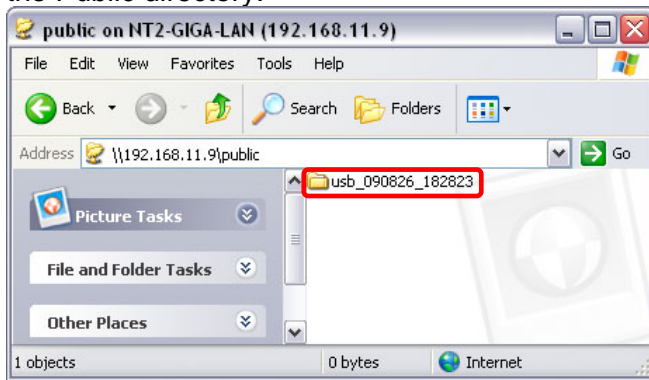
If your music files do not appear, please see your iTunes Server scan interval or start a Rescan.



3.7 USB Copy

When a USB drive is connected to the GL-35DSR via USB, all files on the USB drive can be copied to the internal hard drive of the network drive with a push of the BACKUP button.

1. Connect the USB drive to the front port of your GL-35DSR network drive. We recommend using self-powered USB devices. In order for the network drive to mount the USB drive, the file system has to be FAT32 (read/write). NTFS / EXT3 or other file formats are not supported.
2. Press the **BACKUP** button for one second to copy all the files from the attached USB drive to the Public folder on the network drive.
3. A new folder with the current date and time will automatically be created and all files from the USB drive will be copied into this folder. When the backup is done, the USB drive will be unmounted and you cannot access to the USB drive anymore.
4. The USB drive can now be removed and the data can be accessed on the network drive in the Public directory.



Note

To safely unmount the USB drive without doing a backup, go to the Disk Management menu, select the external USB drive and click **Remove USB device** in order to eject the drive.

4 Appendix

4.1 Specifications

Internal Hard Drive(s)	<ul style="list-style-type: none"> • 3.5" SATA-I or SATA-II hard drives (1.5Gb/s or 3.0Gb/s) • 80GB - 2TB
Interface/Ports	<ul style="list-style-type: none"> • 10/100/1000Base-TX Auto MDI/MDI-X • 2x USB host ports for USB drives and printers
Supported USB devices	<ul style="list-style-type: none"> • USB hard drives (FAT32 only) • USB printers (RAW protocol)
Supported UPnP clients	<ul style="list-style-type: none"> • Xbox 360 • PlayStation 3 • iTunes • DLNA compliant and certified UPnP clients
System Requirements	<ul style="list-style-type: none"> • PC: Windows XP/Vista/7 • Mac: OS 10.2 or above (Windows OS required to initialize NAS for the first time) • Network router or switch
Router/Firewall Requirements	<ul style="list-style-type: none"> • UPnP • Port 80 for HTTP control panel • Port 21 for FTP file server • Port 6881 for BitTorrent downloads
Power (AC adapter)	<ul style="list-style-type: none"> • AC Input: 100-240V, 1.3A, 50-60Hz • DC Output: +5V/4.2A, +12V/3A
Dimensions	17.0cm x 12.0cm x 8.0cm
Operating Temperature/Humidity	5°C ~ 40°C / 10%RH ~ 80%RH non condensing
Storage Temperature/Humidity	-20°C ~ 70°C / 5%RH ~ 90%RH non condensing

Note

Design and specifications are subject to change without prior notice and will depend on the current firmware release.

This manual is based on firmware: FT_2.0.0_20100324.

The diagrams and images contained in this document may not fully represent the actual product and are there for illustration purposes only.

4.2 Trademarks

- MS-DOS, Microsoft, Windows XP/Vista/7 are trademarks of Microsoft Corporation.
- Apple Macintosh and Mac are trademarks of Apple Computer.
- All other third party brands and names are the property of their respective owners.

4.3 Technical Terms

Description for terms and abbreviations used in this manual.

BitTorrent™

BitTorrent is the name of a peer-to-peer (P2P) file distribution client application and also of its related file sharing protocol, both of which were created by programmer Bram Cohen. BitTorrent is designed to distribute large amounts of data widely without incurring the corresponding consumption in costly server and bandwidth resources. For more details, please refer to www.bittorrent.com.

Torrent™

A torrent can mean either a .torrent metadata file or all files described by it, depending on context. The torrent file contains metadata about all the files it makes downloadable, including their names and sizes and checksums of all pieces in the torrent. It also contains the address of a tracker that coordinates communication between the peers in the swarm.

FAT32

File Allocation Table (FAT) is a file system developed by Microsoft for MS-DOS. The FAT file system is considered relatively uncomplicated, and is consequently supported by virtually all existing operating systems for personal computers.

LAN

A Local Area Network (LAN) is a computer network covering a small local area, like a home, office, or small group of buildings such as a home, office, or college.

FTP

FTP or file transfer protocol is a commonly used protocol for exchanging files over any network that supports the TCP/IP protocol (such as the Internet or an intranet). There are two computers involved in an FTP transfer: a server (GL-35DSR LAN) and a client (user's computer).

SMB

Server Message Block (SMB) is a network application-level protocol mainly applied to share files, printers, serial ports, and miscellaneous communications between nodes on a network.

4.4 FAQ

Q: FTP access on my Mac doesn't work properly!

A: The FTP utility on the Mac will be able to read the data on the network storage but you can not write any new data to the drive. To upload files, you will need to install a separate FTP application.

Q: I want to restart or turn off the server but it doesn't work!

A: Make sure that there are no current file transfers in process or any other disk activities. Close any applications that might still be accessing the GL-35DSR and then try again. After turning off the power or pressing the power button, it will take a few seconds before the device starts to power down.

4.5 Precautions

4.5.1 Power on/off precautions

It is recommended to switch the unit off when not in use. When re-locating the device or when not in use for an extended period of time, we strongly recommend unplugging the unit.

4.5.2 Location and placing precautions

Avoid positioning your device in the following places:

- Locations with direct sunlight, next to radiators, other sources of heat.
- Locations with very high temperatures (more than 38° C) or humidity (more than 90%).
- Very dusty or sandy locations.
- Locations subject to vibration, shock, or with a sloping base.

4.5.3 Electricity and power plug

Careful attention must be paid to the following points in order to prevent damage, fire, and/or injury:

- Make sure the power switch is in the OFF position when you connect the power adapter and always connect the power adapter to your device first, before you plug it into the wall socket.
- When removing the power cable from the socket, pull on the plug fixture and never on the cord.
- Do not connect and remove the power cable with wet hands.
- Never try to repair the power cable yourself or to modify it in any way.
- If the unit is dropped or becomes damaged in any other way, unplug the power cable.

4.5.4 Cables

Use only the cables supplied or in order to avoid the risk of malfunction, electric shock, and/or possible interference to the device.

4.6 Important Notices

4.6.1 About this Manual

This manual was written for the FANTEC GL-35DSR network drive with the firmware version FT_2.0.0_20100324. Images and descriptions may slightly vary between this document and the actual product you have, and the available functions will depend on the firmware version.

4.6.2 Intellectual Property

The FANTEC GL-35DSR network drive is not designed or intended to, and may not be used to violate any copyrights or other IP (Intellectual Property) rights. Each user of the network drive may only use it in connection with materials legally owned by or licensed to the user and only extend such ownership or license rights that will permit such use.

4.6.3 GPL Statement

This product contains free software which is licensed under the GNU General Public License. After you purchase this product, you may procure, modify or distribute the source code of the GPL/LGPL software that is used in this product.

To obtain a copy of our open source software, please use the provided CD or contact our support center and we will provide you with a CD-ROM of the source code that is used, charging only the actual expense involved. Otherwise please download the source code from http://www.fantec.de/html/de/1/docid/__gpl.html/content.html. However, please be noted that we cannot provide guarantee with the source code, and there is also no technical support for the source code from us.

TECHNICAL INFORMATION

License information for the software used in the unit.

This product contains Free Software which is licensed under the GNU General Public License. After you purchase this product, you may procure, modify or distribute the source code of the GPL/LGPL software that is used in this product.

If you contact our Support Center, we will provide you with a CD-ROM of the source code that is used, charging only the actual expensed involved. However, please be noted that we can not provide guarantee with the source code, and there is also no technical support for the source code from us.

GNU GENERAL PUBLIC LICENSE

Version 2, June 1991

Copyright (C) 1989, 1991 Free Software Foundation, Inc.

51 Franklin Street, Fifth Floor, Boston, MA 02110-1301, USA

Everyone is permitted to copy and distribute verbatim copies of this license document, but changing it is not allowed.

Preamble

The licenses for most software are designed to take away your freedom to share and change it. By contrast, the GNU General Public License is intended to guarantee your freedom to share and change free software--to make sure the software is free for all its users. This General Public License applies to most of the Free Software Foundation's software and to any other program whose authors commit to using it. (Some other Free Software Foundation software is covered by the GNU Lesser General Public License instead.) You can apply it to your programs, too. When we speak of free software, we are referring to freedom, not price. Our General Public Licenses are designed to make sure that you have the freedom to distribute copies of free software (and charge for this service if you wish), that you receive source code or can get it if you want it, that you can change the software or use pieces of it in new free programs; and that you know you can do these things.

To protect your rights, we need to make restrictions that forbid anyone to deny you these rights or to ask you to surrender the rights. These restrictions translate to certain responsibilities for you if you distribute copies of the software, or if you modify it.

For example, if you distribute copies of such a program, whether gratis or for a fee, you must give the recipients all the rights that you have. You must make sure that they, too, receive or can get the source code. And you must show them these terms so they know their rights.

We protect your rights with two steps: (1) copyright the software, and (2) offer you this license which gives you legal permission to copy, distribute and/or modify the software.

Also, for each author's protection and ours, we want to make certain that everyone understands that there is no warranty for this free software. If the software is modified by someone else and passed on, we want its recipients to know that what they have is not the original, so that any problems introduced by others will not reflect on the original authors' reputations.

Finally, any free program is threatened constantly by software patents. We wish to avoid the danger that redistributors of a free program will individually obtain patent licenses, in effect making the program proprietary. To prevent this, we have made it clear that any patent must be licensed for everyone's free use or not licensed at all.

The precise terms and conditions for copying, distribution and modification follow.

TERMS AND CONDITIONS FOR COPYING, DISTRIBUTION AND MODIFICATION

0. This License applies to any program or other work which contains a notice placed by the copyright holder saying it may be distributed under the terms of this General Public License. The

"Program", below, refers to any such program or work, and a "work based on the Program" means either the Program or any derivative work under copyright law: that is to say, a work containing the Program or a portion of it, either verbatim or with modifications and/or translated into another language. (Hereinafter, translation is included without limitation in the term "modification".) Each licensee is addressed as "you".

Activities other than copying, distribution and modification are not covered by this License; they are outside its scope. The act of running the Program is not restricted, and the output from the Program is covered only if its contents constitute a work based on the Program (independent of having been made by running the Program). Whether that is true depends on what the Program does.

1. You may copy and distribute verbatim copies of the Program's source code as you receive it, in any medium, provided that you conspicuously and appropriately publish on each copy an appropriate copyright notice and disclaimer of warranty; keep intact all the notices that refer to this License and to the absence of any warranty; and give any other recipients of the Program a copy of this License along with the Program.

You may charge a fee for the physical act of transferring a copy, and you may at your option offer warranty protection in exchange for a fee.

2. You may modify your copy or copies of the Program or any portion of it, thus forming a work based on the Program, and copy and distribute such modifications or work under the terms of Section 1 above, provided that you also meet all of these conditions:

a) You must cause the modified files to carry prominent notices stating that you changed the files and the date of any change.

b) You must cause any work that you distribute or publish, that in whole or in part contains or is derived from the Program or any part thereof, to be licensed as a whole at no charge to all third parties under the terms of this License.

c) If the modified program normally reads commands interactively when run, you must cause it, when started running for such interactive use in the most ordinary way, to print or display an announcement including an appropriate copyright notice and a notice that there is no warranty (or else, saying that you provide a warranty) and that users may redistribute the program under these conditions, and telling the user how to view a copy of this License. (Exception: if the Program itself is interactive but does not normally print such an announcement, your work based on the Program is not required to print an announcement.)

These requirements apply to the modified work as a whole. If identifiable sections of that work are not derived from the Program, and can be reasonably considered independent and separate works in themselves, then this License, and its terms, do not apply to those sections when you distribute them as separate works. But when you distribute the same sections as part of a whole which is a work based on the Program, the distribution of the whole must be on the terms of this License, whose permissions for other licensees extend to the entire whole, and thus to each and every part regardless of who wrote it.

Thus, it is not the intent of this section to claim rights or contest your rights to work written entirely by you; rather, the intent is to exercise the right to control the distribution of derivative or collective works based on the Program.

In addition, mere aggregation of another work not based on the Program with the Program (or with a work based on the Program) on a volume of a storage or distribution medium does not bring the other work under the scope of this License.

3. You may copy and distribute the Program (or a work based on it, under Section 2) in object code or executable form under the terms of Sections 1 and 2 above provided that you also do one of the following:

a) Accompany it with the complete corresponding machine-readable source code, which must be distributed under the terms of Sections 1 and 2 above on a medium customarily used for software interchange; or,

b) Accompany it with a written offer, valid for at least three years, to give any third party, for a charge no more than your cost of physically performing source distribution, a complete machine-readable copy of the corresponding source code, to be distributed under the terms of Sections 1 and 2 above on a medium customarily used for software interchange; or,

c) Accompany it with the information you received as to the offer to distribute corresponding source code. (This alternative is allowed only for noncommercial distribution and only if you received the program in object code or executable form with such an offer, in accord with Subsection b above.)

The source code for a work means the preferred form of the work for making modifications to it. For an executable work, complete source code means all the source code for all modules it contains, plus any associated interface definition files, plus the scripts used to control compilation and installation of the executable. However, as a special exception, the source code distributed need not include anything that is normally distributed (in either source or binary form) with the major components (compiler, kernel, and so on) of the operating system on which the executable runs, unless that component itself accompanies the executable.

If distribution of executable or object code is made by offering access to copy from a designated place, then offering equivalent access to copy the source code from the same place counts as distribution of the source code, even though third parties are not compelled to copy the source along with the object code.

4. You may not copy, modify, sublicense, or distribute the Program except as expressly provided under this License. Any attempt otherwise to copy, modify, sublicense or distribute the Program is void, and will automatically terminate your rights under this License. However, parties who have received copies, or rights, from you under this License will not have their licenses terminated so long as such parties remain in full compliance.

5. You are not required to accept this License, since you have not signed it. However, nothing else grants you permission to modify or distribute the Program or its derivative works. These actions are prohibited by law if you do not accept this License. Therefore, by modifying or distributing the Program (or any work based on the Program), you indicate your acceptance of this License to do so, and all its terms and conditions for copying, distributing or modifying the Program or works based on it.

6. Each time you redistribute the Program (or any work based on the Program), the recipient automatically receives a license from the original licensor to copy, distribute or modify the Program subject to these terms and conditions. You may not impose any further restrictions on the recipients' exercise of the rights granted herein. You are not responsible for enforcing compliance by third parties to this License.

7. If, as a consequence of a court judgment or allegation of patent infringement or for any other reason (not limited to patent issues), conditions are imposed on you (whether by court order, agreement or otherwise) that contradict the conditions of this License, they do not excuse you from the conditions of this License. If you cannot distribute so as to satisfy simultaneously your obligations under this License and any other pertinent obligations, then as a consequence you may not distribute the Program at all. For example, if a patent license would not permit royalty-free redistribution of the Program by all those who receive copies directly or indirectly through you, then the only way you could satisfy both it and this License would be to refrain entirely from distribution of the Program.

If any portion of this section is held invalid or unenforceable under any particular circumstance, the balance of the section is intended to apply and the section as a whole is intended to apply in other circumstances.

It is not the purpose of this section to induce you to infringe any patents or other property right claims or to contest validity of any such claims; this section has the sole purpose of protecting the integrity of the free software distribution system, which is implemented by public license practices. Many people have made generous contributions to the wide range of software distributed through that system in reliance on consistent application of that system; it is up to the author/donor to decide if he or she is willing to distribute software through any other system and a licensee cannot impose that choice.

This section is intended to make thoroughly clear what is believed to be a consequence of the rest of this License.

8. If the distribution and/or use of the Program is restricted in certain countries either by patents or by copyrighted interfaces, the original copyright holder who places the Program under this License may add an explicit geographical distribution limitation excluding those countries, so that

distribution is permitted only in or among countries not thus excluded. In such case, this License incorporates the limitation as if written in the body of this License.

9. The Free Software Foundation may publish revised and/or new versions of the General Public License from time to time. Such new versions will be similar in spirit to the present version, but may differ in detail to address new problems or concerns.

Each version is given a distinguishing version number. If the Program specifies a version number of this License which applies to it and "any later version", you have the option of following the terms and conditions either of that version or of any later version published by the Free Software Foundation. If the Program does not specify a version number of this License, you may choose any version ever published by the Free Software Foundation.

10. If you wish to incorporate parts of the Program into other free programs whose distribution conditions are different, write to the author to ask for permission. For software which is copyrighted by the Free Software Foundation, write to the Free Software Foundation; we sometimes make exceptions for this. Our decision will be guided by the two goals of preserving the free status of all derivatives of our free software and of promoting the sharing and reuse of software generally.

NO WARRANTY

11. BECAUSE THE PROGRAM IS LICENSED FREE OF CHARGE, THERE IS NO WARRANTY FOR THE PROGRAM, TO THE EXTENT PERMITTED BY APPLICABLE LAW. EXCEPT WHEN OTHERWISE STATED IN WRITING THE COPYRIGHT HOLDERS AND/OR OTHER PARTIES PROVIDE THE PROGRAM "AS IS" WITHOUT WARRANTY OF ANY KIND, EITHER EXPRESSED OR IMPLIED, INCLUDING, BUT NOT LIMITED TO, THE IMPLIED WARRANTIES OF MERCHANTABILITY AND FITNESS FOR A PARTICULAR PURPOSE. THE ENTIRE RISK AS TO THE QUALITY AND PERFORMANCE OF THE PROGRAM IS WITH YOU. SHOULD THE PROGRAM PROVE DEFECTIVE, YOU ASSUME THE COST OF ALL NECESSARY SERVICING, REPAIR OR CORRECTION.

12. IN NO EVENT UNLESS REQUIRED BY APPLICABLE LAW OR AGREED TO IN WRITING WILL ANY COPYRIGHT HOLDER, OR ANY OTHER PARTY WHO MAY MODIFY AND/OR REDISTRIBUTE THE PROGRAM AS PERMITTED ABOVE, BE LIABLE TO YOU FOR DAMAGES, INCLUDING ANY GENERAL, SPECIAL, INCIDENTAL OR CONSEQUENTIAL DAMAGES ARISING OUT OF THE USE OR INABILITY TO USE THE PROGRAM (INCLUDING BUT NOT LIMITED TO LOSS OF DATA OR DATA BEING RENDERED INACCURATE OR LOSSES SUSTAINED BY YOU OR THIRD PARTIES OR A FAILURE OF THE PROGRAM TO OPERATE WITH ANY OTHER PROGRAMS), EVEN IF SUCH HOLDER OR OTHER PARTY HAS BEEN ADVISED OF THE POSSIBILITY OF SUCH DAMAGES.

© Copyright 2010 by FANTEC, Inc. All Rights Reserved

The information contained in this manual is believed to be accurate and reliable. FANTEC assumes no responsibility for any errors contained in this manual. FANTEC reserves the right to make changes in the specifications and/or design of this product without prior notice. The diagrams contained in this manual may also not fully represent the product that you are using and are there for illustration purposes only. FANTEC assumes no responsibility for any differences between the product mentioned in this manual and the product you may have.