

FANTEC HDD-Sneaker 2

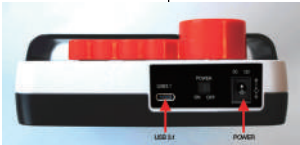
USER MANUAL



Includes:
Hardware Installation Guide
Hard Drive Formatting Guide
Backup software Express Start



Power connector and USB 3.1 port:

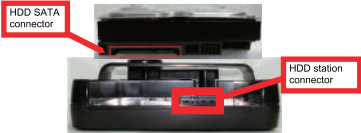


Backup button and power switch

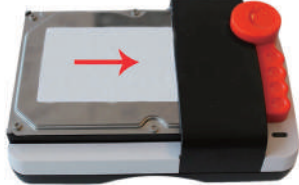


Note:
1. In order not to damage the HDD, it is strongly recommended that HDD swapping is practiced when the power is off.
2. The one-touch-backup software is running on Windows OS only.
3. LED indicator: Blue: USB 3.1 / 3.0 connection
Green: USB 2.0 connection

Hard Drive Installation Guide



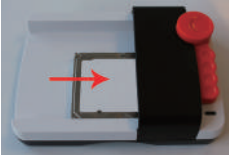
Push the hard drive carefully towards the SATA connector and make sure the SATA connector is properly connected.



STEP1:
For the use of a 2.5" notebook hard drive / SSD, please turn up the 2.5" guide bar.

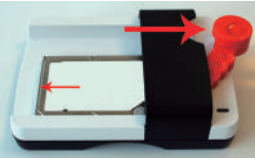
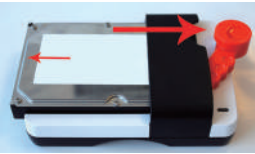


STEP2:
Push the hard drive towards the SATA connector and make sure the SATA interface is properly connected.



STEP3:
To remove the hard drive, pull the lever and the hard drive is automatically ejected.

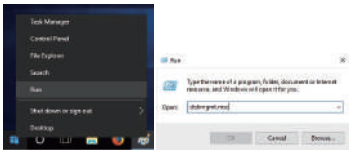
Note: Power off the device before removing the hard drive.



HDD Formatting Guide

- New hard disks have to be initialized and formatted, before you can use them.
- Connect the HDD Sneaker 2 via USB to your PC. Then turn the power on.

STEP1: Right-click on the Windows Start-Logo icon and select the "Run" column. Then please type "diskmgmt.msc" into the "Open:" box and confirm by pressing ENTER key.



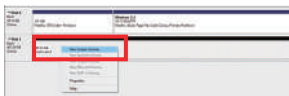
STEP2: Select "Disk Management" and you will see your External HDD showed "Not initialized".



STEP3: Right-click on the "Not initialized" block and select "Initialize Disk". Then please follow the instruction of the wizard to complete.



STEP4: The disk will be shown as "Online". Right-click on the black "Unallocated" block and the Left-click on "New Simple Volume".



STEP5: The Wizard to create a new Volume will pop up. Please follow the instruction of the wizard to complete.



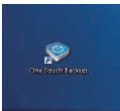
STEP6: After the volume has been created, your disk will be displayed as 'New Volume' showing your selected drive letter.



STEP7: The hard drive is now available under "This PC" or "My Computer". At this point you can use the disk to store your data.

Installation of backup software

Please download the Backup software from our website www.fantec.com—it's assigned to the item "FANTEC HDD Sneaker 2". After downloading the file, please extract it and find the folder containing the installation file "Setup.exe". Click "Install" for next step. Select the path for installation and click "Install". After the installation is complete, click "Finish" to exit.
If the installation is done properly, you will find the "One Touch Backup" symbol on your desktop. Please double-click it in order to open and configure the software.



Usage of backup software • main menu :



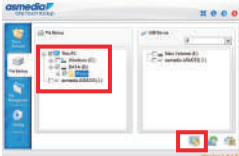
| | | |
|-------------------|-----------------|--------------------|
| 1. Express Backup | 2. File backup | 3. File management |
| 4. Settings | 5. Quick Launch | 6. Minimize |
| 7. Info | 8. Help | 9. Quit |

Configure Express Backup
Connect the device to your PC, power it on and open the backup software. Please select File Backup. Now an overview of your local hard drives will be displayed.

A. At this windows you can see which drives, folders or files can be back upped. On the right side, the destination drive inside the HDD Sneaker2 is displayed.



B. Please select the data to be back upped and then click on click "Backup" to confirm the settings.



A. By pressing "OK" you can immediately start the backup procedure, by pressing "Cancel" you can abort the instant Backup. The settings of the data to be back upped will be saved.



B. Now the settings at the Express Backup are complete. By pressing the backup button at the HDD Sneaker 2, the backup dialog box will pop up and you can execute the backup procedure by clicking on "OK".

Address for warranty return shipments:
FANTEC GmbH
Department RMA/Service
Bilwender Bldg. 605B
21033 Hamburg Germany

www.fantec.de • www.fantec-forum.de
service@fantec.de